



SpecialRubber

VACUUM EXPERTS

VENTOSE Suction cups



INDICE

Index

4 _ L'azienda / *Company*

5 _ Perché Special Rubber / *Why Special Rubber*

6 _ La nostra storia / *Our History*

7 _ I nostri servizi / *Our services*

8 _ I macchinari / *Our Machinery*

9 _ I prodotti / *Products*

10 _ Campi d'uso / *Industries*

11 _ La progettazione / *Design department*

12 _ La produzione - stampaggio gomma / *Production - rubber moulding*

13 _ Certificazioni / *Certifications*

14 _ Condizioni di lavoro - Come ordinare / *Duties - How to order*

16 _ Caratteristiche / *Properties*

18 _ Ventose / *Suction cups*

64 _ Portaventosa / *Cup holder*

76 _ Esempi / *Examples*

L'AZIENDA

Company

Da oltre 40 anni

Special Rubber progetta e produce articoli tecnici in gomma e silicone seguendo il cliente in tutte le fasi di sviluppo di nuovi articoli.

Siamo specializzati nella vulcanizzazione di gomma e gomma accoppiata con supporti rigidi, in particolare metallici.

Eseguiamo taglio meccanico di guarnizioni o particolari piani e lavorazioni di precisione su elementi vulcanizzati (rettifica e incisione laser).

For over 40 years

Special Rubber has been designing and manufacturing technical products in rubber with the client's involvement throughout every step of the development process of new products.

We are specialists in vulcanising rubber and rubber strengthened with rigid supports, especially with metal.

We machine cut seals or particular plans and precision works on vulcanised elements (adjustment and laser cutting).





PERCHÉ SPECIAL RUBBER

Why Special Rubber

Dall'idea al prodotto

Rivolgersi a Special Rubber significa ottenere una consulenza ed un servizio completo, dal progetto dello stampo all'articolo realizzato.

Anche piccole quantità

Con Special Rubber puoi realizzare anche piccole tirature per prodotti test e per lavorazioni su misura.

Certificazioni per ogni utilizzo

Siamo in grado di fornire e certificare mescole o prodotti finiti per ogni utilizzo, anche alimentare, farmaceutico e medicale.

From plan to product

Choosing Special Rubber means receiving consultancy and a complete service, from the moulding project to the finalised product.

Including small-scale projects

With Special Rubber you can even order smaller batches for test products and tailor-made processes.

Certification for all uses

We are capable of providing and certifying compounds or finished products for any use, even for food, pharmaceutical or medical use.

LA NOSTRA STORIA

Our history

1971

La nascita / The beginning

Special Rubber nasce nel 1971 come società specializzata nella produzione di primi equipaggiamenti e ricambistica per il settore automotive. Dopo il 1992 aumenta la gamma di prodotti e servizi forniti, stringendo forti legami con le imprese del territorio producendo soles per calzature, articoli tecnici in gomma e gomma metallo, antivibranti, parti speciali per macchinari industriali, parti per motori di vetture e motociclette da competizione.

Special Rubber was founded in 1971 as a company specialising in the production of essential equipment and spare parts for the automotive sector. After 1992 increased the range of products and services provided, forging strong connections with other domestic companies. These companies produced shoe soles, technical items in rubber and rubber/metal, anti-vibration items, special parts for industrial machinery and parts for automobiles and racing motorcycles.

2005

Lo sviluppo all'estero / Development abroad

Nel 2005 in sviluppo il suo primo ufficio commerciale ed aumenta il fatturato estero fino ad arrivare a l 50%.

IN 2005 Special Rubber opened its first sales office and increased its turnover abroad, reaching up to 50%.

2020

Oggi / Today

Oggi Special Rubber produce articoli tecnici con tutti i principali elastomeri e con elastomeri speciali dedicati ad una svariata quantità di settori industriali: elettromedicale, ascensoristico, farmaceutico, alimentare, packaging, macchinari industriali, ferroviario e nautico.

Today Special Rubber manufactures technical products with not only all of the main elastomers but with some special ones too. These are dedicated to a vast number of industrial sectors: electromedical, the lift industry, pharmaceutical, food, packaging, industrial machinery, the railway and nautical industries too.

I NOSTRI SERVIZI

Our services

Dalla materia prima al prodotto finito *From raw materials to the finished product*

Studiamo con attenzione ogni passaggio della progettazione, della composizione delle mescole e della produzione per offrire al cliente il miglior prodotto possibile.

We study each step of the design stage with care - the composition and production of the compounds - in order to be able to offer the client the best possible product.

- Progettazione dell'articolo da specifiche cliente
- Progettazione da disegno
- Vendita da catalogo
- Realizzazione stampi
- Scelta delle materie prime
- Caratterizzazione mescole
- Vulcanizzazione su supporti plastici o metallici
- Certificazione delle mescole
- Certificazione dell'articolo finale
- Possibilità di realizzazione di piccole o grandi quantità

- *Designing the product with the client's specification*
- *Planning from designs*
- *Catalogue sales*
- *Mould creation*
- *Choice of raw materials*
- *Special compounds*
- *Vulcanisation on plastic or metallic supports*
- *Compound certification*
- *Certification of the end product*
- *Option of carrying out projects of small or large quantities*



I NOSTRI MACCHINARI

Our machinery

REPARTO PRODUZIONE

- 10 presse oleodinamiche con piani fino a 650x650mm e 300 tonnellate di chiusura
- 2 mescolatori aperti per la produzione e la confezione delle mescole
- 2 preformatrici per la preparazione e il dosaggio della mescola
- 1 sbavatrice ad azoto
- 1 tornio parallelo dotato di rettifica per esterni
-

REPARTO METALLI

- 1 sabbiatrice/pallinatrice automatica a buratto per la pulitura degli inserti metallici
- 1 sabbiatrice/pallinatrice manuale per la pulitura degli inserti metallici
- 1 impianto di verniciatura per gli inserti da vulcanizzare

OFFICINA MECCANICA

- 1 centro di lavoro CNC a 3 assi
- 1 tornio parallelo

PRODUCTION UNIT

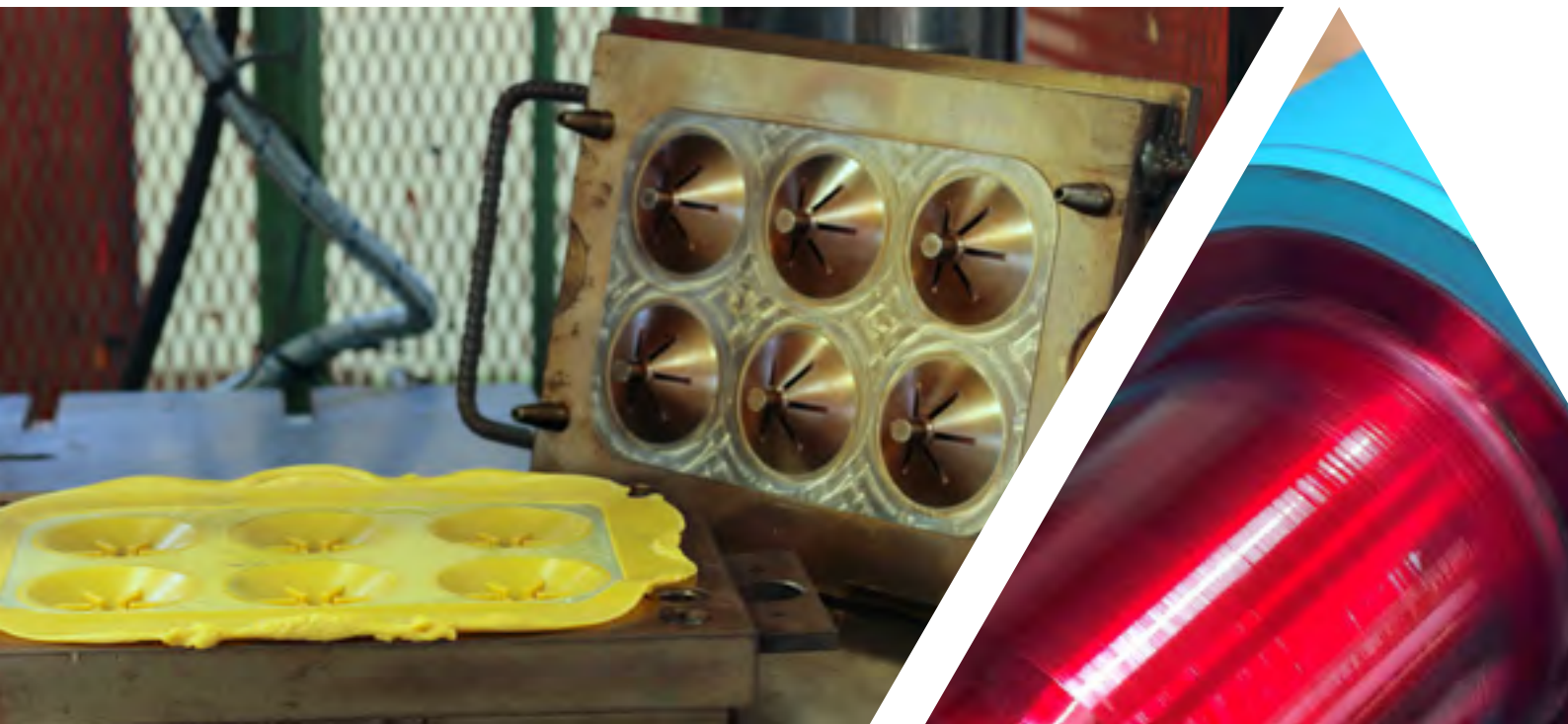
- 10 hydraulic presses with surfaces up to 650x650mm and 300 tonnes of clamping force
- 2 open mixers for the production and presentation of the compounds
- 2 pre-formers for the preparation and dispensing of the compound
- 1 nitrogen deburring machine
- 1 parallel lathe with surface grinder

METAL UNIT

- 1 automatic sandblaster/shot-peening machine with tumble finishing for the cleaning of metallic inserts
- 1 manual sandblaster/shot-peening machine for the cleaning of metallic inserts
- 1 painting installation for inserts to be vulcanised

MACHINE SHOP

- 1 CNC 3-axis machining centre
- 1 parallel lathe



I PRODOTTI

Products



Studio tecnologico, progettazione CAD e realizzazione di articoli tecnici in gomma e silicone

Progettiamo e realizziamo articoli tecnici in gomma seguendo il cliente in tutte le fasi di sviluppo dei nuovi prodotti. Siamo specializzati nella vulcanizzazione di elastomeri e silicone anche accoppiati a supporti rigidi, in particolare metallici. Eseguiamo taglio meccanico di guarnizioni o particolari piani e lavorazioni di precisione su elementi vulcanizzati (rettifica e incisione laser).

A technological lab, cad design and the manufacture of technical products in rubber and silicone.

We design and manufacture technical products in rubber with the client's involvement throughout every step of the development process for new products. We are specialists in vulcanising elastomers and silicone, also strengthened with supports, especially with metal.

We machine cut seals or particular plans and precision works on vulcanised elements (adjustment and laser cutting).

CAMPI D'USO

Industries



ARTICOLO TECNICO TECHNICAL PRODUCTS

Produzione articoli tecnici in gomma e gomma/metallo: antivibranti, guarnizioni, rulli, ruote, rotelle, soffietti, parapolvere e passacavi stampati con tutte le tipologie di elastomero.

The manufacture of technical products in rubber and rubber-metal: anti-vibration items, seals, rollers, wheels, bellows, dust seals and fairleads moulded with all types of elastomer.



FOOD AND BEVERAGE FOOD AND BEVERAGE

Articoli in gomma e silicone adatti al contatto con alimenti (particolari per elettrodomestici, guarnizioni industriali, tubi e manicotti, ventose).

Products in rubber and silicone suitable for contact with food (parts for white goods, industrial seals, tubes and couplings, suction cups).



AUTOMOTIVE AUTOMOTIVE

Primi equipaggiamenti e ricambistica per autovetture, mezzi pesanti, cicli e motociclette.

Essential equipment and spare parts for automobiles, HGVs, bicycles and motorcycles.



ASCENSORISTICO THE LIFT INDUSTRY

Produzione di primi equipaggiamenti e ricambistica per ascensori, centraline oleodinamiche per sollevamento e montacarichi.

The manufacture of essential equipment and spare parts for lifts, hydraulic control units for lifting and hoists.



MEDICALE E FARMACEUTICO MEDICAL AND PHARMACEUTICAL

Produciamo componenti per macchinari elettromedicali, tappi per contenitori farmaceutici, articoli usa e getta per utilizzo medicale).

We manufacture components for electromedical machinery, caps for pharmaceutical containers, disposable items for medical use).



OIL, GAS E ACQUA POTABILE OIL, GAS AND DRINKING WATER

Guarnizioni e articoli in generale per il settore.

Seals and general sector-specific items.

LA PROGETTAZIONE

Design department

Realizziamo internamente la maggior parte delle attrezzature e degli stampi necessari alla produzione in modo da ridurre al minimo i costi di realizzazione, garantendo una qualità sempre elevata ed un totale controllo del processo.

L'ufficio progettazione dispone di un avanzato software CAD 3D per supportare il cliente nella difficile fase di studio e prototipazione dei nuovi articoli. L'officina meccanica realizza attrezzature e stampi avvalendosi di un centro di lavoro a 3 assi ed un tornio. La maggior parte della viteria speciale e degli inserti metallici per la realizzazione di accoppiati gomma-metallo viene realizzata nella nostra officina meccanica.

Per lavorazioni particolari come taglio laser e trancia di metalli ci affidiamo ad aziende italiane che negli anni hanno dimostrato elevati standard qualitativi

To reduce production costs, guarantee high quality and total control of the process, we create most of the key equipment and moulds internally.

The design department uses an advanced 3D CAD software to support the client in the challenging research and prototyping phases of creating new products. The machine shop manufactures equipment and moulds using 3-axis machining centre and a lathe. Most of the special screws and metal inserts for the creation of the strengthened rubber-metal is carried out in our machine shop.

For certain processes like laser cutting and metal punching we collaborate with Italian companies who have demonstrated high standards of quality over the years.



LA PRODUZIONE

Production

Lo stampaggio della gomma e del silicone avvengono grazie all'utilizzo di presse oleodinamiche a piani riscaldati che conformano e vulcanizzano le mescole, mediante l'applicazione di calore e pressione in uno stampo metallico di forma e dimensioni adatte.

Le affinate tecniche di stampaggio gomma e stampaggio silicone ci permettono processi economici, fasi di lavoro rapide e qualità elevata.

Rubber and silicone moulding are performed thanks to the use of heated platen hydraulic presses which shape and vulcanize the compounds, by applying heat and pressure in a metal mould of suitable shape and size. The refined rubber and silicone moulding techniques allow us economic processes, fast work phases and high quality.

MESCOLE

La sala mescole progetta e produce compounds a partire da materie prime ricercate in base alle necessità del cliente.

La collaborazione con fornitori qualificati e selezionati ci permette di reperire l'intera gamma di polimeri disponibili sul mercato: oltre alle principali tipologie (SBR, NR, NBR, EPM, EPDM, CR, IR, IIR, ACM, BR), stampiamo anche poliuretani (URE, AU, EU), mescole silconiche (VMQ, PMQ, PVMQ), fluoroelastomeri e polimeri speciali (EA, CSM, ECO, FKM, HNBR, XNBR, FVMQ).

Compounds

The mixing room produces compounds which start as raw materials, specially selected depending on the client's needs.

Our collaboration with qualified and specially selected providers allows us to source the entire range of polymers available on the market: other than the main types (SBR, NR, NBR, EPM, EPDM, CR, IR, IIR, ACM, BR), we also mould polyurethanes (URE, AU, EU), silicone compounds (VMQ, PMQ, PVMQ) fluoro-elastomers and special polymers (EA, CSM, ECO, FKM, HNBR, XNBR, FVMQ).

We have compounds for medical and pharmaceutical use which are also suitable for food contact.



IL PROCEDIMENTO

The process

I POLIMERI

I polimeri di base sono scelti in base alle caratteristiche che il prodotto finito dovrà avere. Sono acquistati da produttori e importatori che lavorano su scala mondiale.

POLYMERS

The basic polymers are chosen based on the desired characteristics for the finished product. They are purchased from manufacturers and importers all over the world.



LE CARICHE RINFORZANTI

Cariche rinforzanti nere o neutre e ausiliari di processo sono necessari per incrementare le basilari caratteristiche dei polimeri di base. Anche in questa fase la grande esperienza dei nostri tecnici supporta il cliente in fase di progettazione del particolare finito.

REINFORCING FILLERS

We use black or achromatic reinforcing fillers and process ancillaries to amplify the standard characteristics of the basic polymers. During this phase, our engineers' vast experience is a pillar of support to the client in designing the finished product.

LA LAVORAZIONE

La fase di lavorazione vera e propria della miscela viene svolta internamente per i lotti di produzione più piccoli e per le mescole speciali. Quando è richiesta una produzione di grandi lotti ci appoggiamo a fornitori esterni certificati e selezionati in anni di strette e proficue collaborazioni.

THE PROCESS

For smaller batches and special compounds, the real processing phase takes place internally. When larger batches are requested, we use external, certified suppliers who we have specially selected after years of continuous and productive collaboration.



LE MESCOLE

Le mescole realizzate internamente o esternamente vengono messe in produzione solo dopo aver passato tutti i test e le prove che ne garantiscono la piena conformità.

COMPOUNDS

Whether created internally or externally, our compounds only go into production after having passed all of the tests that guarantee their full compliance.

CERTIFICAZIONI

Certifications

ISO 9001:2015

CERTIFICATE

SI CERTIFICA CHE
THIS IS TO CERTIFY THAT

IL SISTEMA DI GESTIONE PER LA QUALITÀ DI
THE QUALITY MANAGEMENT SYSTEM OF

Special Rubber S.r.l.
Via Cavour, 3 - 21032 - Caravate (VA) - Italia

UNITA OPERATIVE
OPERATIVE UNIT
Via Cavour, 3 - 21032 - Caravate (VA) - Italia

È CONFORME ALLA NORMA
CONFORMS TO THE STANDARD:

ISO 9001:2015
PER LE SEGUENTI ATTIVITÀ
FOR THE FOLLOWING SCOPE OF ACTIVITY

Progettazione e stampaggio di articoli tecnici in gomma e silicone.
(Design and molding of technical articles in rubber and silicone.)

Settore EA: 14
EA Sector: 14

Data emissione certificato origine: 23/12/2019
Original issuing date of certificate

Certificato n.: **19.0169-SGQ**
Certification no.

Data 1ma emissione: 23/12/2019
Date of 1st issuing

Data aggiornamento: ///
Date of update

Data di scadenza: 22/12/2022
Expiry date

Per l'Organismo di Certificazione
for the Certification Body
SPS InterCert SA

Alessandro Martinelli
Director

Questo certificato è di proprietà di SPS InterCert e dovrà essere restituito in caso di ritiro. Il presente certificato è soggetto al mantenimento della conformità del SGQ ai criteri di audit e al suo monitoraggio da parte di SPS InterCert. La validità del certificato e gli aggiornamenti circa eventuali variazioni del suo stato possono essere verificati facendo richiesta a: info@spsintercert.org. Riferirsi ai documenti dell'organizzazione per l'applicabilità dei requisiti della norma.
This certificate is property of SPS InterCert and shall be returned in case of withdrawal. This certificate is subject to maintenance of QMS's conformity of auditing criteria and to its monitoring by SPS InterCert's part. The certificate's validity and updates regarding any variations in its status can be verified by inquiring here: info@spsintercert.org. Please refer to the company documents for details of application of standard requirements.

SPS InterCert SA® - Via Zorzi, 15 - 6902 Lugano - Paradiso (CH) - Tel. + 41 919 220015 - e-mail: info@spsintercert.org - (Mod. cert 01-Accr. Ed. 01/R03)

  SAS signatory of IAF & EA mutual recognition (MLA)

CONDIZIONI DI LAVORO

Duties

Piano di lavoro orizzontale con carico uniformemente distribuito, materiali non porosi di superficie liscia, grado di vuoto del 70% almeno. Per carichi verticali dimezzare il valore di forza "n".

Horizontal working surface with uniformly distributed load. Non-porous materials with smooth surface, degree of vacuum at least 70%. For vertical loads, halve the capacity value "n".

COME ORDINARE

How to order

1.2095__

Ventosa / *Suction cups*

1.2095__ + 5.005000

Ventosa con supporto / *Suction cups with support*

1.2095__ + 6.004000 + 8.322200

Gruppo completo (ventosa + supporto + portaventosa)

Complete unit (suction cups + support + suction cup holder)

CARATTERISTICHE

Properties

| Mescole standard Standard mixes | Temperatura Temperature | Durezza / colore Hardness / colour | RESISTENZA A / RESISTANCE TO | | | |
|------------------------------------|----------------------------|--|------------------------------|---------------------|--------------------------|---------------------|
| | | | Usura Wear | Oli Oils | Invecchiamento Ageing | Ozono Ozone |
| NR | - 50 ° / + 70 ° | A1 (W) - 40 Sha A2 (W) - 50 Sha A5 (W) - 60 Sha A3 (K) - 50 Sha | OTTIMA EXCELLENT | SCARSA LOW | SCARSA LOW | SCARSA LOW |
| PARA | - 50 ° / + 70 ° | M1 - 40 Sha | OTTIMA EXCELLENT | SCARSA LOW | SCARSA LOW | SCARSA LOW |
| NR - FDA | - 50 ° / + 70 ° | D1 (W) - 40 Sha D2 (W) - 50 Sha | OTTIMA EXCELLENT | SCARSA LOW | SCARSA LOW | SCARSA LOW |
| NBR | - 40 ° / + 135 ° | B1 (K) - 50 Sha B3 (K) - 60 Sha B4 (K) - 70 Sha | BUONA GOOD | OTTIMA EXCELLENT | OTTIMA EXCELLENT | SCARSA LOW |
| CR | - 20 ° / + 120 ° | C1 (K) - 50 Sha | BUONA GOOD | SCARSA LOW | OTTIMA EXCELLENT | OTTIMA EXCELLENT |
| VMQ | - 50 ° / + 200 ° | E2 (N) - 50 Sha | BUONA GOOD | DISCRETA DECENT | OTTIMA EXCELLENT | OTTIMA EXCELLENT |
| VMQ-FDA | - 50 ° / + 200 ° | F1 (N) - 50 Sha | BUONA GOOD | DISCRETA DECENT | OTTIMA EXCELLENT | OTTIMA EXCELLENT |
| VMQ-MED | - 50 ° / + 200 ° | G1 (B) - 65 Sha | BUONA GOOD | DISCRETA DECENT | OTTIMA EXCELLENT | OTTIMA EXCELLENT |
| VMQ-FDA-MD | - 50 ° / + 200 ° | H1 (B) - 65 Sha | BUONA GOOD | DISCRETA DECENT | OTTIMA EXCELLENT | OTTIMA EXCELLENT |
| VMQ-HT | - 50 ° / + 300 ° | K1 (Br) - 65 Sha | BUONA GOOD | DISCRETA DECENT | OTTIMA EXCELLENT | OTTIMA EXCELLENT |
| FKM | - 20 ° / + 250 ° | P1 (G) - 50 Sha P2 (G) - 65 Sha | DISCRETA DECENT | OTTIMA EXCELLENT | OTTIMA EXCELLENT | OTTIMA EXCELLENT |
| EPDM | - 40 ° / + 155 ° | L4 (K) - 35 Sha L5 (K) - 50 Sha L6 (K) - 70 Sha | BUONA GOOD | SCARSA LOW | OTTIMA EXCELLENT | OTTIMA EXCELLENT |
| IR-FDA-MD | - 50 ° / + 70 ° | L1 (B) - 50 Sha | OTTIMA EXCELLENT | SCARSA LOW | DISCRETA DECENT | SCARSA LOW |

(W) = bianco / white, (K) = nero / black, (N) = neutro / neutral, (B=) blu / blue, (Br) = marrone / brown, (G) = verde / green

CATALOGO VENTOSE

Suction cups catalogue

Ventosa 1.1060

ventosa piana 60 mm

Codice: 1.1060__

Diametro: 60mm

Portata: 64 N

Corsa: ----

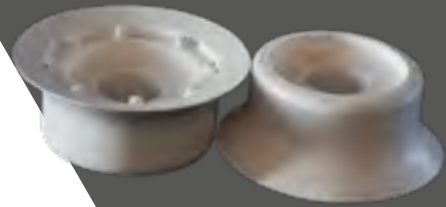
Mescole: A1 - E2

Durezza: 40 - 60 Sh.

Componenti: Gomma

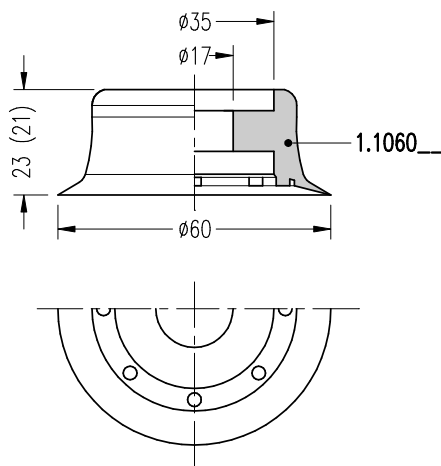
Attacchi: 5.004000 - 5.005010

Attacco con valvola: 6.004000 - 6.008025



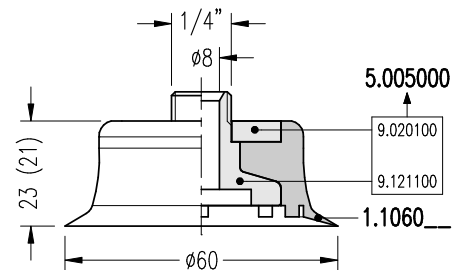
VENTOSA

Cod: 1.1060__



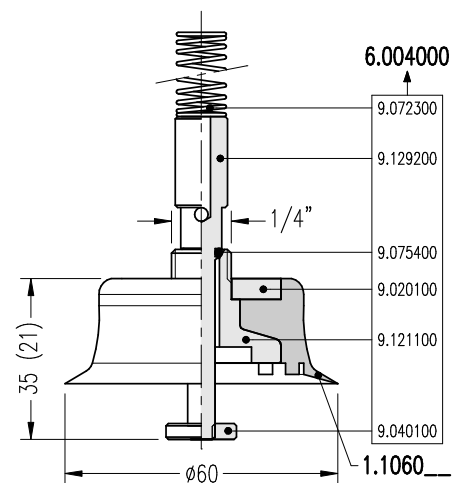
VENTOSA + SUPPORTO

Cod: 1.1060__ + 5.005000



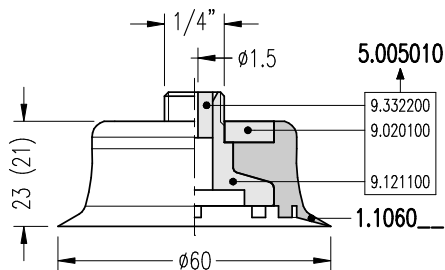
VENTOSA + SUPPORTO VALVOLA

Cod: 1.1060__ + 6.004000



VENTOSA + SUPPORTO (con bussola strozzatrice)

Cod: 1.1060__ + 5.005010



Ventosa 1.1075

ventosa piana 75 mm



Codice: 1.1075__

Diametro: 75mm

Portata: 101 N

Corsa: ----

Mescole: A1 - E2

Durezza: 40 - 60 Sh.

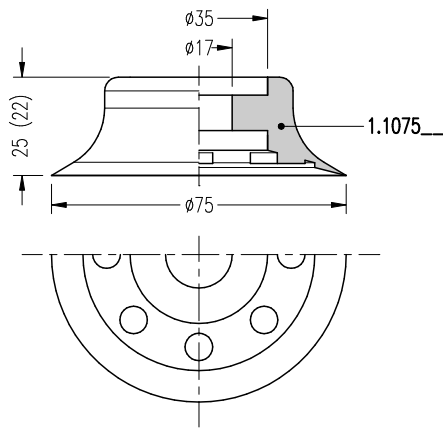
Componenti: Gomma

Attacchi: 5.004000 - 5.005010

Attacco con valvola: 6.004000 - 6.008025

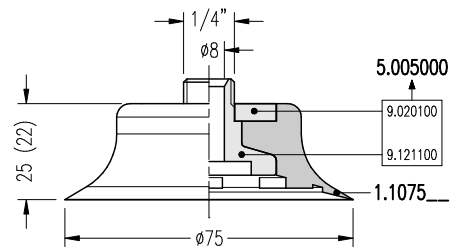
VENTOSA

Cod: 1.1075__



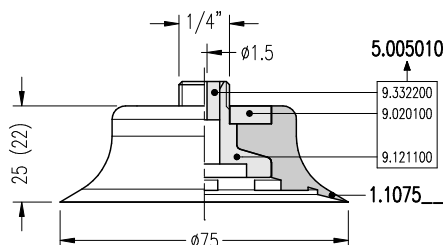
VENTOSA + SUPPORTO

Cod: 1.1075__ + 5.005000



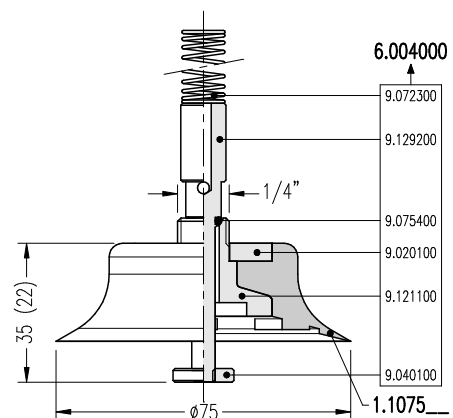
VENTOSA + SUPPORTO (con boccola strozzatrice)

Cod: 1.1060__ + 5.005010



VENTOSA + SUPPORTO VALVOLA

Cod: 1.1060__ + 6.004000



Ventosa 1.1110

ventosa piana 110 mm



Codice: 1.1110__

Diametro: 110mm

Portata: 217 N

Corsa: ----

Mescole: A1 - E2

Durezza: 40 - 60 Sh.

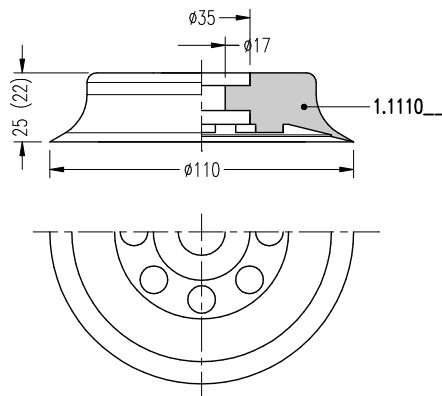
Componenti: Gomma

Attacchi: 5.004000 - 5.005010

Attacco con valvola: 6.004000 - 6.008025

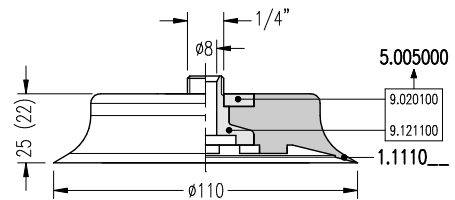
VENTOSA

Cod: 1.1110__



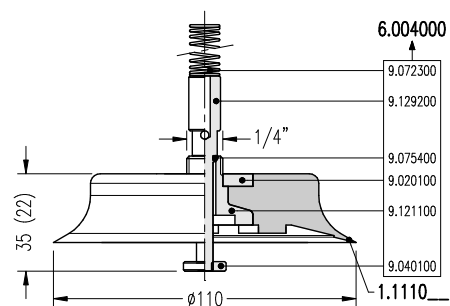
VENTOSA + SUPPORTO

Cod: 1.1110__ + 5.005000



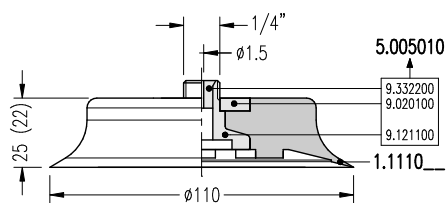
VENTOSA + SUPPORTO VALVOLA

Cod: 1.1110__ + 6.004000



VENTOSA + SUPPORTO (con boccola strozzatrice)

Cod: 1.1110__ + 5.005010



Ventosa 1.2010

ventosa a coppa 10 mm

Codice: 1.2010__

Diametro: 10 mm

Portata: 1,8 N

Corsa: 2 mm

Mescole: A3 - E2

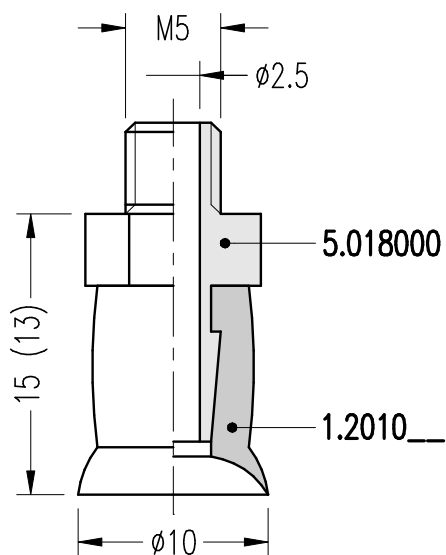
Durezza: 40-60 Sh.

Componenti: Gomma

Attacchi: 5.018000

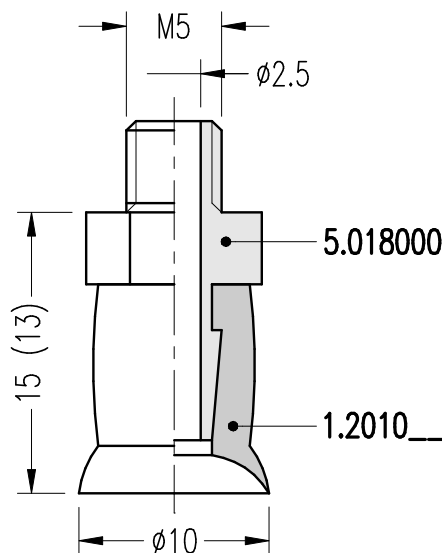
VENTOSA

Cod: 1.2010__



VENTOSA + SUPPORTO

Cod: 1.2010__ + 5.018000



Ventosa 1.2015

ventosa a coppa 15 mm

Codice: 1.2015__

Diametro: 15 mm

Portata: 4 N

Corsa: 3 mm

Mescole: A3 - E2

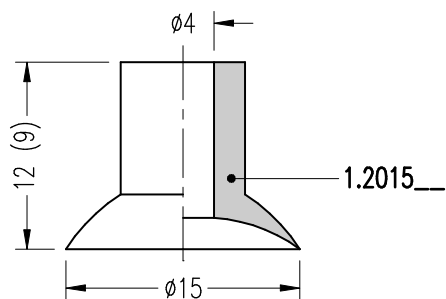
Durezza: 40 - 60 Sh.

Componenti: Gomma

Attacchi: 5.018000

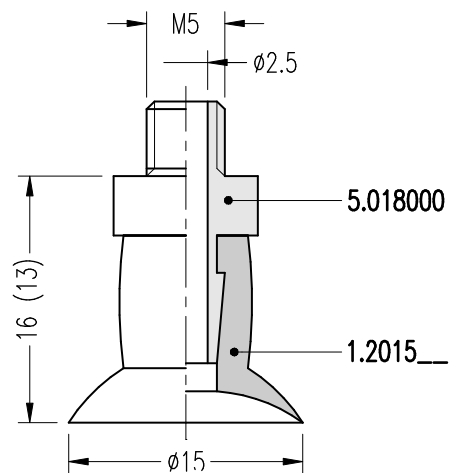
VENTOSA

Cod: 1.2015__



VENTOSA + SUPPORTO

Cod: 1.2015__ + 5.018000



Ventosa 1.2020

ventosa a coppa 20 mm

Codice: 1.2020__

Diametro: 20 mm

Portata: 7 N

Corsa: 3 mm

Mescole: A3 - E2

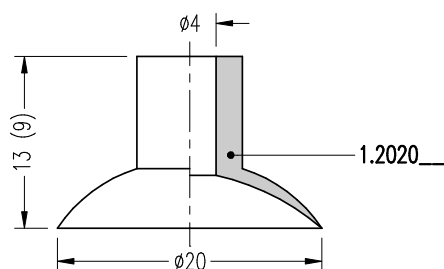
Durezza: 40 - 60 Sh.

Componenti: Gomma

Attacchi: 5.018000

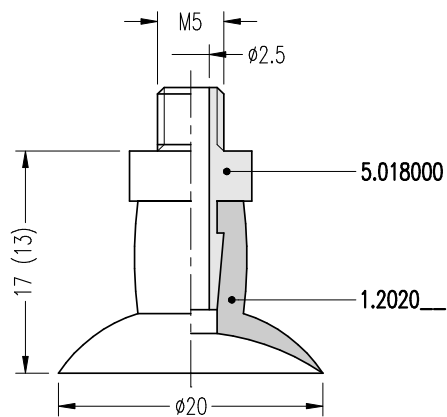
VENTOSA

Cod: 1.2020__



VENTOSA + SUPPORTO

Cod: 1.2020__ + 5.018000



VENTOSE A COPPA

Ventosa 1.2030

ventosa a coppa 30 mm



Codice: 1.2030__

Diametro: 30 mm

Portata: 16 N

Corsa: 5 mm

Mescole: A1 - A3 - E2

Durezza: 40 - 60 Sh.

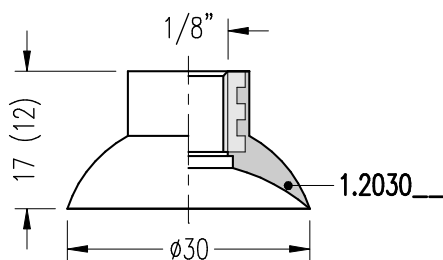
Componenti: Gomma - Alluminio

Attacchi: 5.002000 - 5.003000

Attacco con valvola: 6.002000

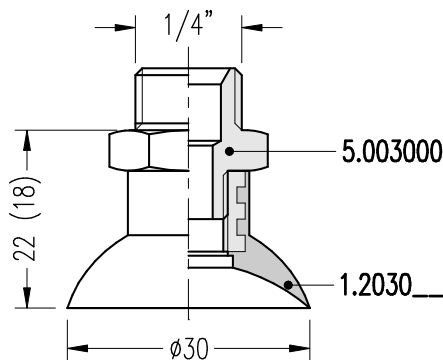
VENTOSA

Cod: 1.2030__



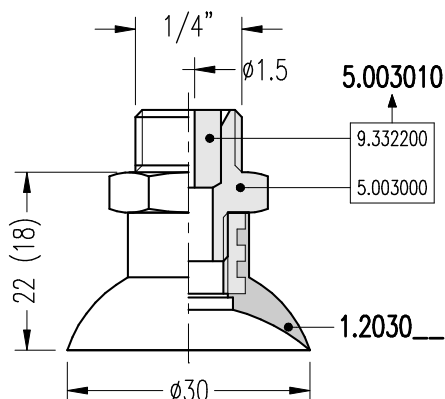
VENTOSA + SUPPORTO

Cod: 1.2030__ + 5.003000



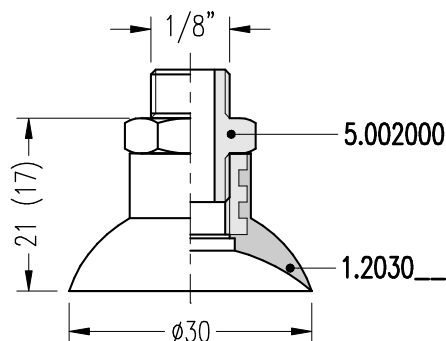
VENTOSA + SUPPORTO (con boccola strozzatrice)

Cod: 1.2030__ + 5.003010



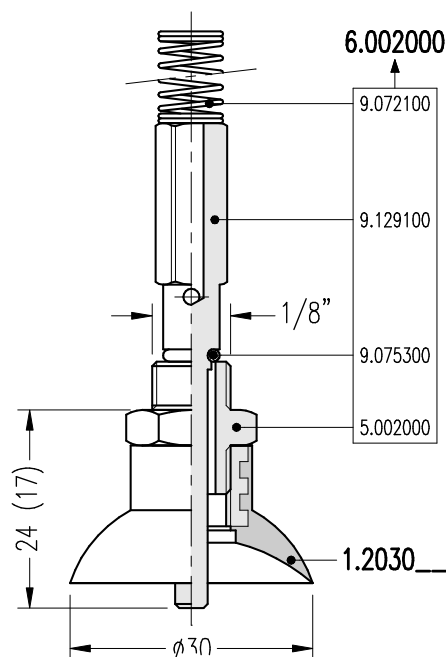
VENTOSA + SUPPORTO

Cod: 1.2030__ + 5.002000



VENTOSA + SUPPORTO VALVOLA

Cod: 1.2030__ + 5.003000



Ventosa 1.2035

ventosa a coppa 35 mm

Codice: 1.2035__

Diametro: 35 mm

Portata: 22 N

Corsa: 5 mm

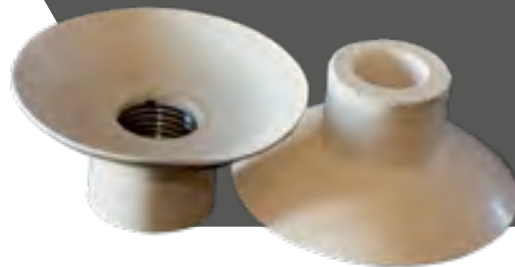
Mescole: A1 - A3 - E2

Durezza: 40 - 60 Sh.

Componenti: Gomma

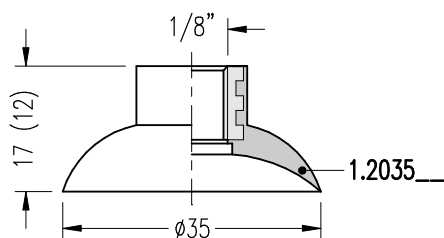
Attacchi: 5.002000 - 5.003000

Attacco con valvola: 6.002000



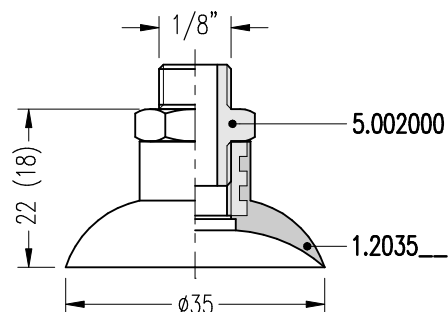
VENTOSA

Cod: 1.2035__



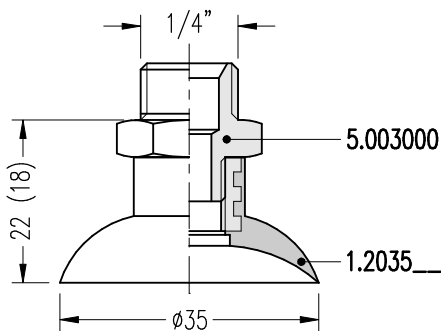
VENTOSA + SUPPORTO

Cod: 1.2035__ + 5.002000



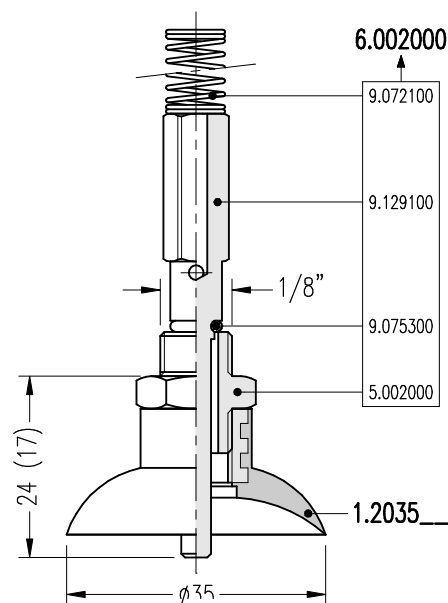
VENTOSA + SUPPORTO

Cod: 1.2035__ + 5.003000



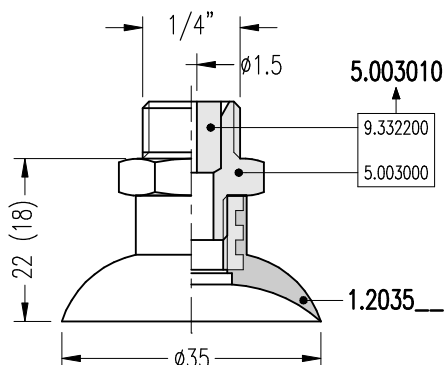
VENTOSA + SUPPORTO VALVOLA

Cod: 1.2035__ + 5.003010



VENTOSA + SUPPORTO (con boccola strozzatrice)

Cod: 1.2035__ + 5.003010



Ventosa 1.2045

ventosa a coppa 45 mm



Codice: 1.2045__

Diametro: 45 mm

Portata: 36 N

Corsa: 5 mm

Mescole: A1 - A3 - E2

Durezza: 40 - 60 Sh.

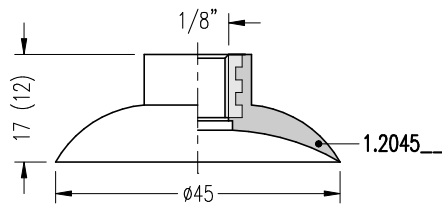
Componenti: Gomma

Attacchi: 5.002000 - 5.003000

Attacco con valvola: 6.002000

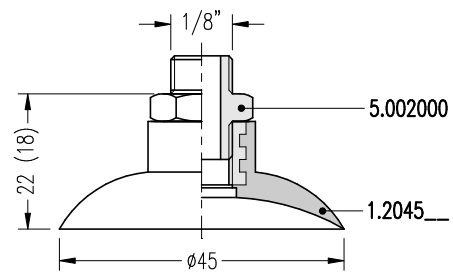
VENTOSA

Cod: 1.2045__



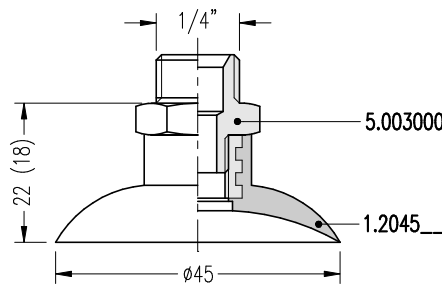
VENTOSA + SUPPORTO

Cod: 1.2045__ + 5.002000



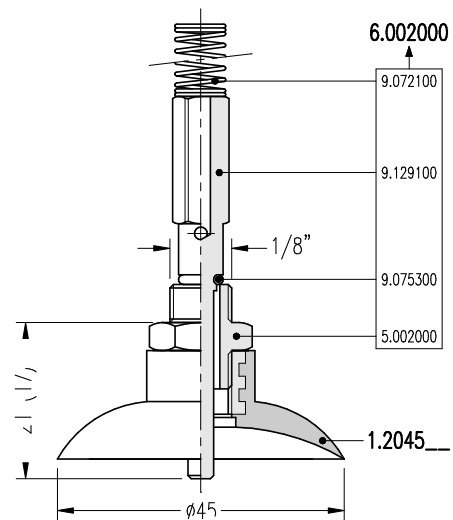
VENTOSA + SUPPORTO

Cod: 1.2045__ + 5.003000



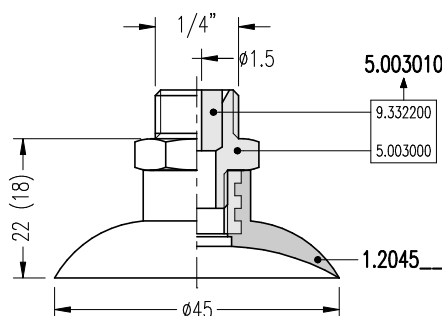
VENTOSA + SUPPORTO VALVOLA

Cod: 1.2045__ + 5.003000



VENTOSA + SUPPORTO (con boccola strozzatrice)

Cod: 1.2045__ + 5.003010



VENTOSE A COPPA

Ventosa 1.2075

ventosa a coppa 75 mm

Codice: 1.2075__

Diametro: 75 mm

Portata: 101 N

Corsa: 6 mm

Mescole: A1 - A3 - E2

Durezza: 40 - 60 Sh.

Componenti: Gomma

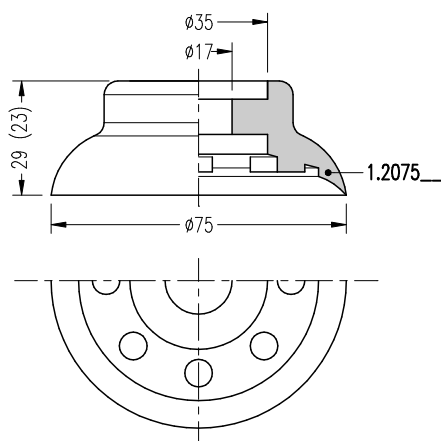
Attacchi: 5.005000 - 5.005010

Attacco con valvola: 6.004000 - 6.008025



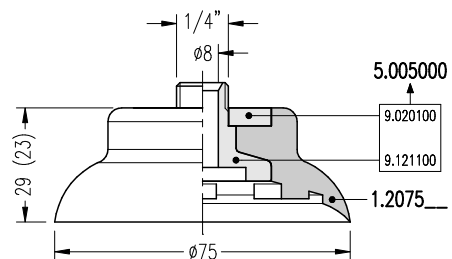
VENTOSA

Cod: 1.2075__



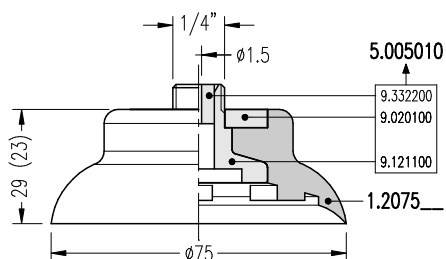
VENTOSA + SUPPORTO

Cod: 1.2075__ + 5.005000



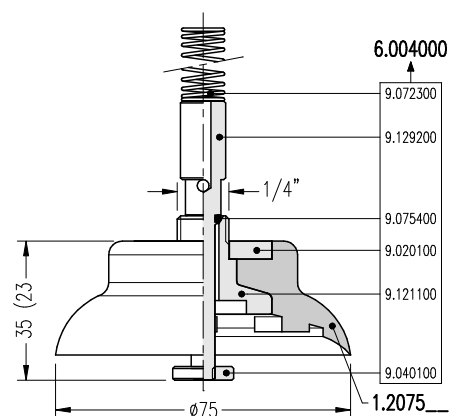
VENTOSA + SUPPORTO (con boccola strozzatrice)

Cod: 1.2075__ + 5.005010



VENTOSA + SUPPORTO VALVOLA

Cod: 1.2075__ + 6.004000



Ventosa 1.2087

ventosa a coppa 87 mm



Codice: 1.2087__

Diametro: 87 mm

Portata: 136 N

Corsa: 15 mm

Mescole: Tutte le mescole*

Durezza: 40 - 60 Sh.

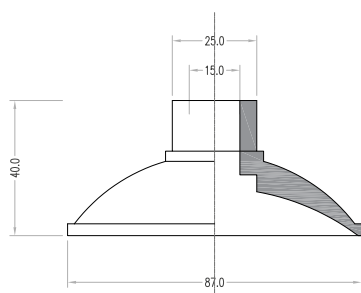
Componenti: Gomma

Attacchi: 5.035000

*riferirsi alla tabella a pagina 16

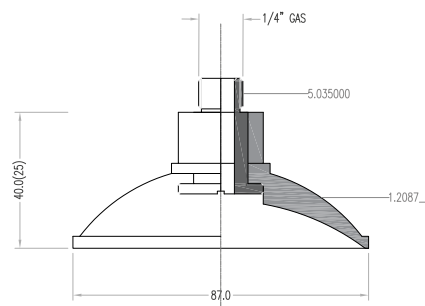
VENTOSA

Cod: 1.2087__



VENTOSA + SUPPORTO

Cod: 1.2087__ + 5.035000



Ventosa 1.2095

ventosa a coppa 95 mm

Codice: 1.2095__

Diametro: 95 mm

Portata: 162 N

Corsa: 6 mm

Mescole: Tutte le mescole*

Durezza: 40 - 60 Sh.

Componenti: Gomma

Attacchi: 5.005000 - 5.005010

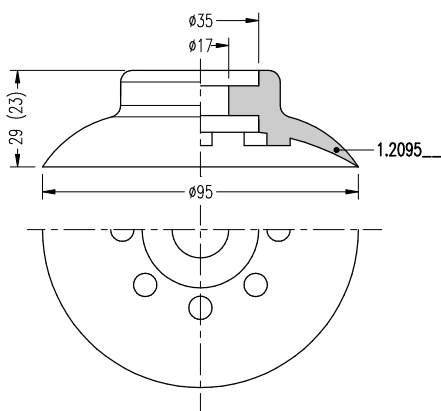
Attacco con valvola: 6.004000 - 6.008025

*riferirsi alla tabella a pagina 16



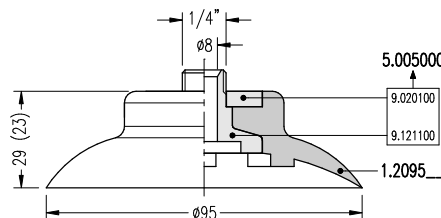
VENTOSA

Cod: 1.2095__



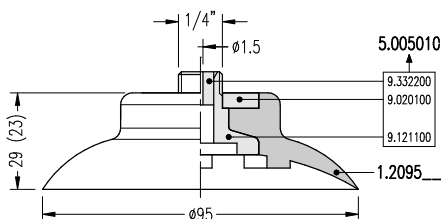
VENTOSA + SUPPORTO

Cod: 1.2095__ + 5.005000



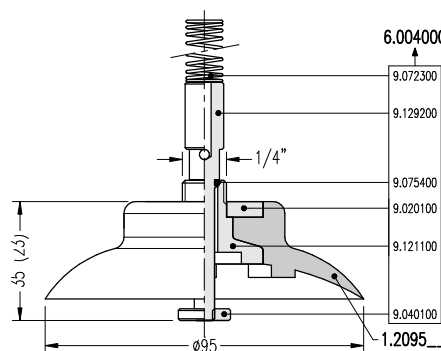
VENTOSA + SUPPORTO (con boccola strozzatrice)

Cod: 1.2095__ + 5.005010



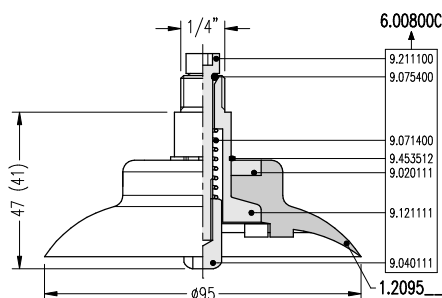
VENTOSA + SUPPORTO VALVOLA

Cod: 1.2095__ + 6.004000



VENTOSA + SUPPORTO VALVOLA SPECIALE

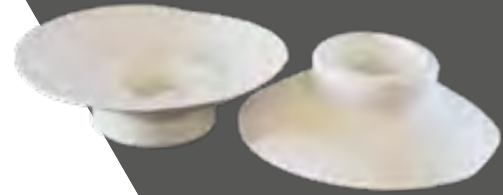
Cod: 1.2095__ + 6.008000



A RICHIESTA - ON REQUEST

Ventosa 1.2096

ventosa a coppa 96 mm



Codice: 1.2096__

Diametro: 96 mm

Portata: 162 N

Corsa: 6 mm

Mescole: Tutte le mescole*

Durezza: 40 - 60 Sh.

Componenti: Gomma

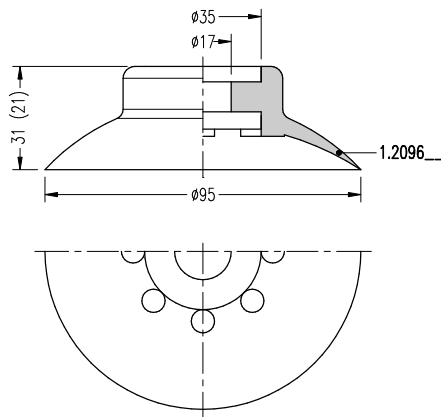
Attacchi: 5.005000 - 5.005010

Attacco con valvola: 6.004000 - 6.008025

*riferirsi alla tabella a pagina 16

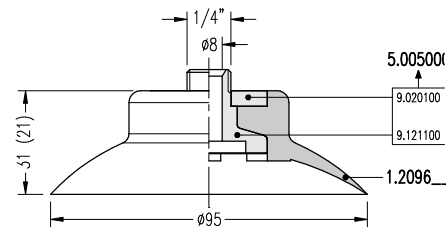
VENTOSA

Cod: 1.2096__



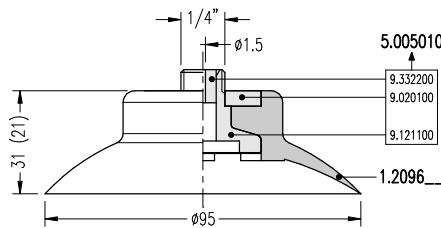
VENTOSA + SUPPORTO

Cod: 1.2096__ + 5.005000



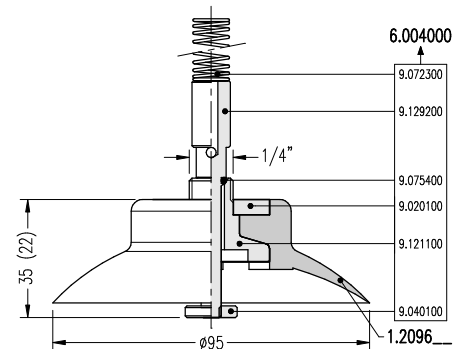
VENTOSA + SUPPORTO (con boccola strozzatrice)

Cod: 1.2096__ + 5.005010



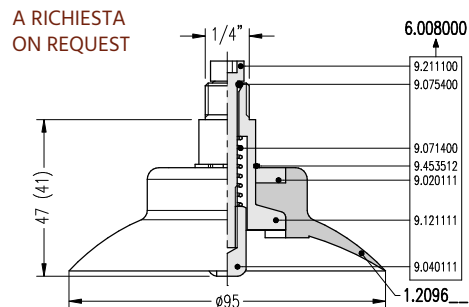
VENTOSA + SUPPORTO VALVOLA

Cod: 1.2096__ + 6.004000



VENTOSA + SUPPORTO VALVOLA SPECIALE

Cod: 1.2096__ + 6.008000



A RICHIESTA
ON REQUEST

Ventosa 1.3030

ventosa a soffietto 30 mm

Codice: 1.3030__

Diametro: 30 mm

Portata: 16 N

Corsa: 22 mm

Mescole: A3 - E2

Durezza: 40 - 60 Sh.

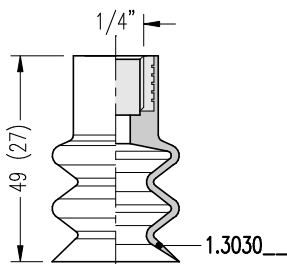
Componenti: Gomma - Alluminio

Attacchi: 5.003000 - 5.003010



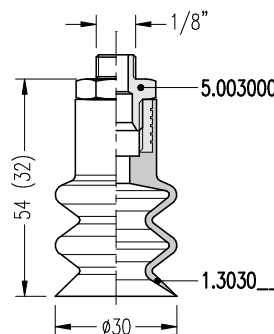
VENTOSA

Cod: 1.3030__



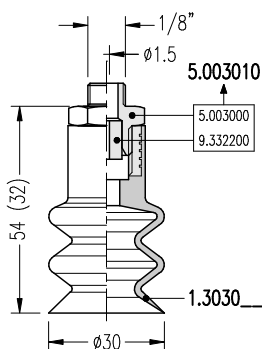
VENTOSA + SUPPORTO

Cod: 1.3030__ + 5.003000



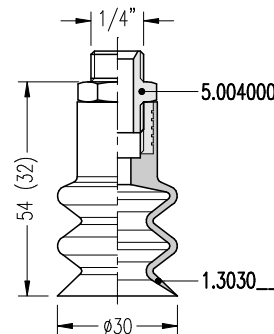
VENTOSA + SUPPORTO (con boccola strozzatrice)

Cod: 1.3030__ + 5.003010



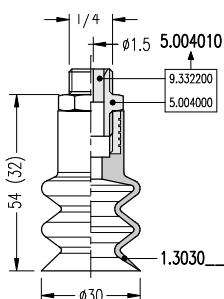
VENTOSA + SUPPORTO

Cod: 1.3030__ + 5.004000



VENTOSA + SUPPORTO (con boccola strozzatrice)

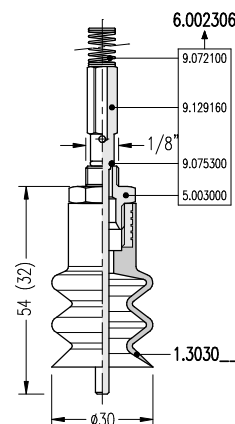
Cod: 1.3030__ + 5.004010



VENTOSA + SUPPORTO VALVOLA

Cod: 1.3030__ + 6.002306

A RICHIESTA
ON REQUEST



Ventosa 1.3040

ventosa a soffietto 40 mm



Codice: 1.3040__

Diametro: 40 mm

Portata: 28 N

Corsa: 20 mm

Mescole: A3 - E2

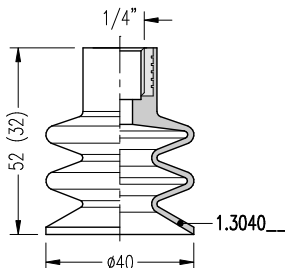
Durezza: 40 - 60 Sh.

Componenti: Gomma - Alluminio

Attacchi: 5.003000 - 5.003010

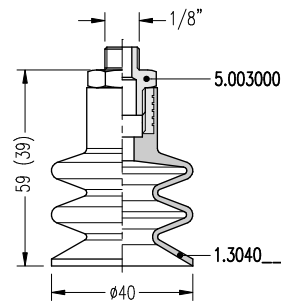
VENTOSA

Cod: 1.3040__



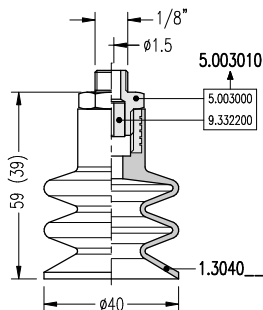
VENTOSA + SUPPORTO

Cod: 1.3040__ + 5.003000



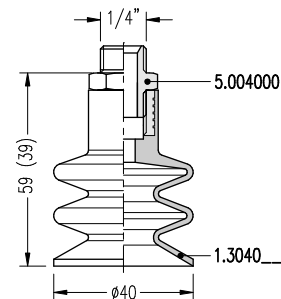
VENTOSA + SUPPORTO (con boccola strozzatrice)

Cod: 1.3040__ + 5.003010



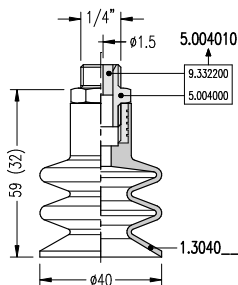
VENTOSA + SUPPORTO

Cod: 1.3040__ + 5.004000



VENTOSA + SUPPORTO (con boccola strozzatrice)

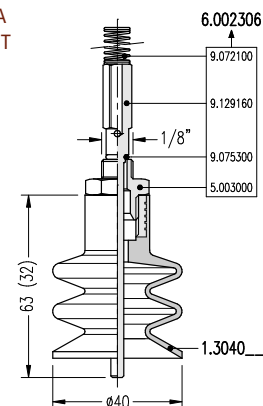
Cod: 1.3040__ + 5.004010



VENTOSA + SUPPORTO VALVOLA

Cod: 1.3040__ + 6.002306

A RICHIESTA
ON REQUEST



Ventosa 1.3050

ventosa a soffietto 50 mm



Codice: 1.3050__

Diametro: 50 mm

Portata: 45 N

Corsa: 22 mm

Mescole: Tutte le mescole*

Durezza: 40 - 60 Sh.

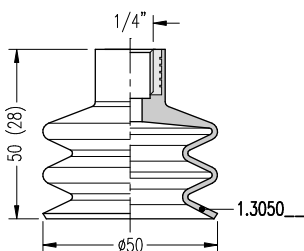
Componenti: Gomma - Alluminio

Attacchi: 5.003000 - 5.003010

*riferirsi alla tabella a pagina 16

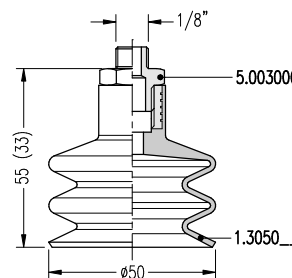
VENTOSA

Cod: 1.3050__



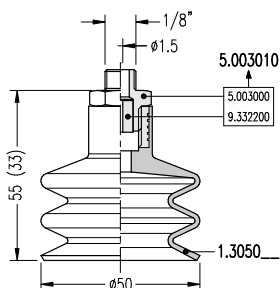
VENTOSA + SUPPORTO

Cod: 1.3050__ + 5.003000



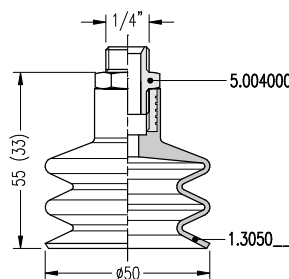
VENTOSA + SUPPORTO (con boccola strozzatrice)

Cod: 1.3050__ + 5.003010



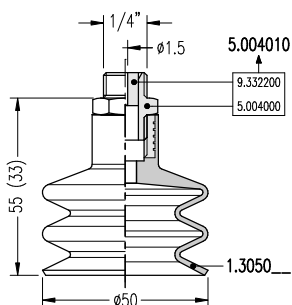
VENTOSA + SUPPORTO

Cod: 1.3050__ + 5.004000



VENTOSA + SUPPORTO (con boccola strozzatrice)

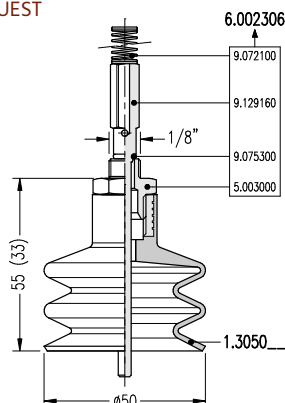
Cod: 1.3050__ + 5.004010



VENTOSA + SUPPORTO VALVOLA

Cod: 1.3050__ + 6.002306

A RICHIESTA
ON REQUEST



Ventosa 1.3060

ventosa a soffiETTO 60 mm



Codice: 1.3060__

Diametro: 60 mm

Portata: 64 N

Corsa: 29 mm

Mescole: A3 - E2

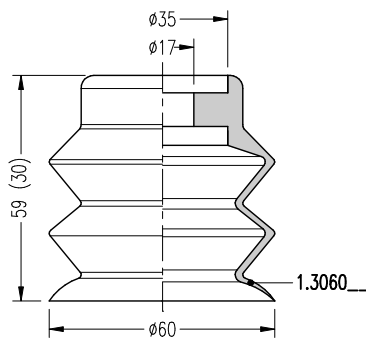
Durezza: 40 - 60 Sh.

Componenti: Gomma

Attacchi: 5.005000 - 5.005010

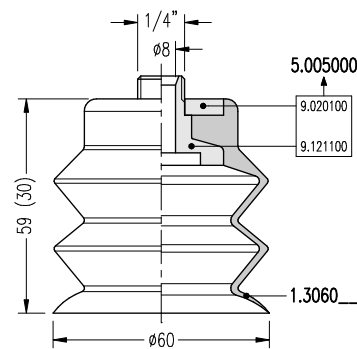
VENTOSA

Cod: 1.3060__



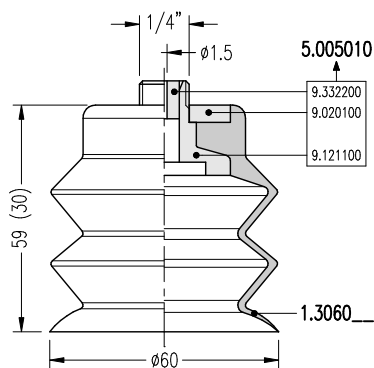
VENTOSA + SUPPORTO

Cod: 1.3060__ + 5.005000



VENTOSA + SUPPORTO (con boccola strozzatrice)

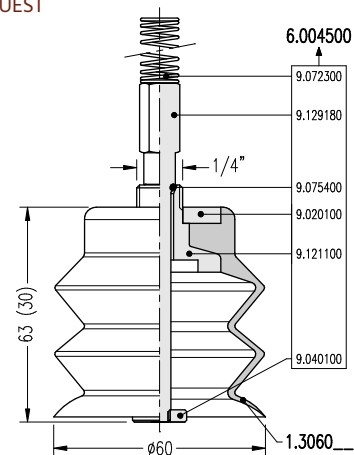
Cod: 1.3060__ + 5.005010



VENTOSA + SUPPORTO VALVOLA

Cod: 1.3060__ + 6.004500

A RICHIESTA
ON REQUEST



Ventosa 1.3062

ventosa a soffietto 62 mm



Codice: 1.3062__

Diametro: 62 mm

Portata: 69 N

Corsa: 22 mm

Mescole: A3 - E2

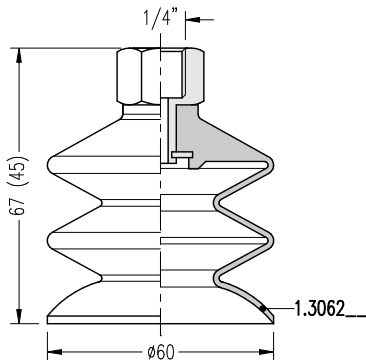
Durezza: 40 - 60 Sh.

Componenti: Gomma - Alluminio

Attacchi: 5.004000 - 5.004010

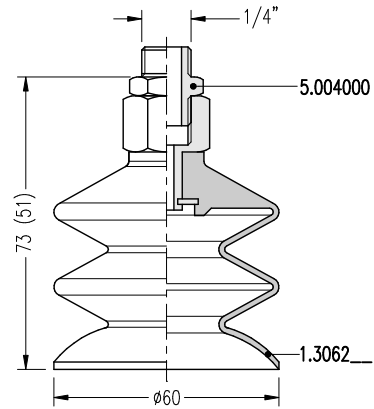
VENTOSA

Cod: 1.3062__



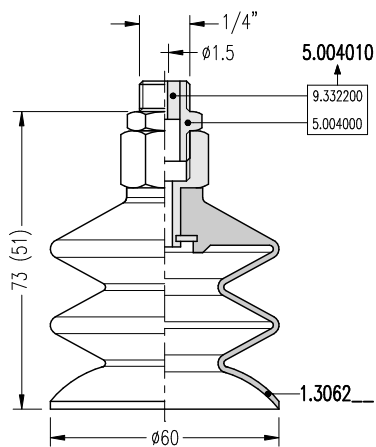
VENTOSA + SUPPORTO

Cod: 1.3062__ + 5.004000



VENTOSA + SUPPORTO (con boccola strozzatrice)

Cod: 1.3062__ + 5.004010



Ventosa 1.3086

ventosa a soffietto 86 mm

Codice: 1.3086__

Diametro: 86 mm

Portata: 133 N

Corsa: 22 mm

Mescole: A3 - E2

Durezza: 40 - 60 Sh.

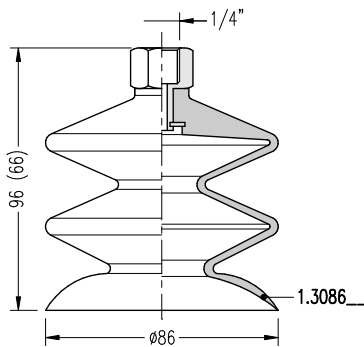
Componenti: Gomma - Alluminio

Attacchi: 5.004000 - 5.004010



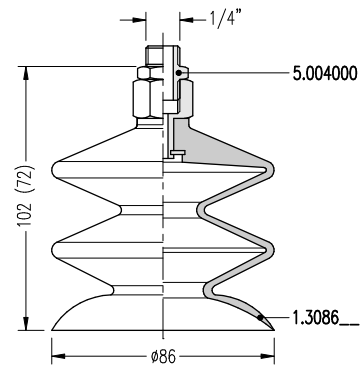
VENTOSA

Cod: 1.3086__



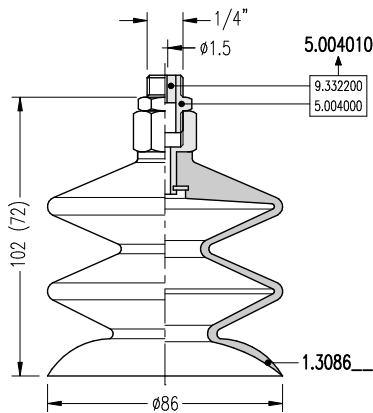
VENTOSA + SUPPORTO

Cod: 1.3086__ + 5.004000



VENTOSA + SUPPORTO (con boccola strozzatrice)

Cod: 1.3086__ + 5.004010



Ventosa 1.3095

ventosa a soffietto 95 mm



Codice: 1.3095__

Diametro: 95 mm

Portata: 162 N

Corsa: 42 mm

Mescole: A3 - E2

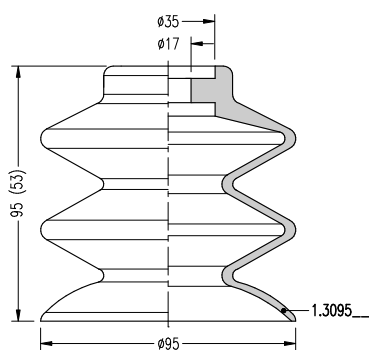
Durezza: 40 - 60 Sh.

Componenti: Gomma

Attacchi: 5.005000 - 5.005010

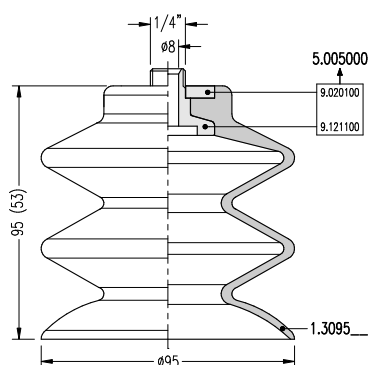
VENTOSA

Cod: 1.3095__



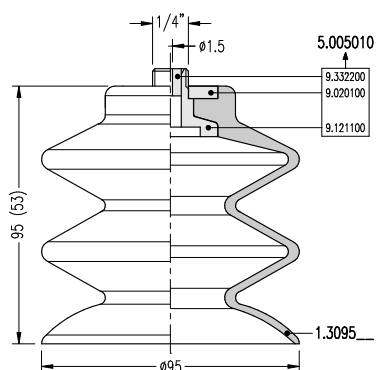
VENTOSA + SUPPORTO

Cod: 1.3095__ + 5.005000



VENTOSA + SUPPORTO (con boccola strozzatrice)

Cod: 1.3095__ + 5.005010



Ventosa 1.3530

ventosa a soffietto 30 mm



Codice: 1.3530__

Diametro: 30 mm

Portata: 16 N

Corsa: 13 mm

Mescole: A3 - E2

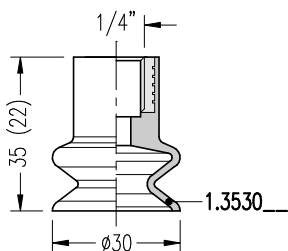
Durezza: 40 - 60 Sh.

Componenti: Gomma - Alluminio

Attacchi: 5.003000 - 5.004000 / 5.003010 - 5.004010

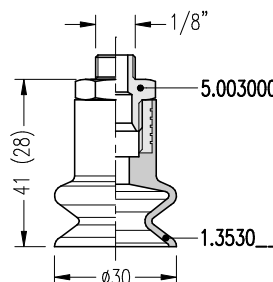
VENTOSA

Cod: 1.3530__



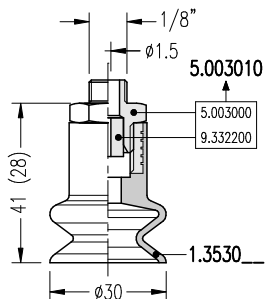
VENTOSA + SUPPORTO

Cod: 1.3530__ + 5.003000



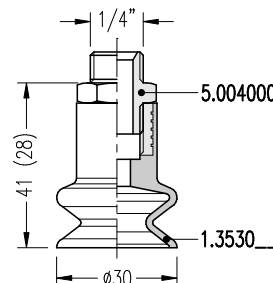
VENTOSA + SUPPORTO (con boccola strozzatrice)

Cod: 1.3530__ + 5.003010



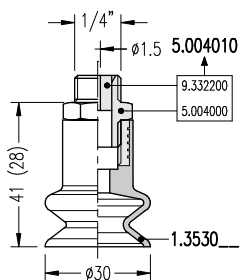
VENTOSA + SUPPORTO

Cod: 1.3530__ + 5.004000



VENTOSA + SUPPORTO (con boccola strozzatrice)

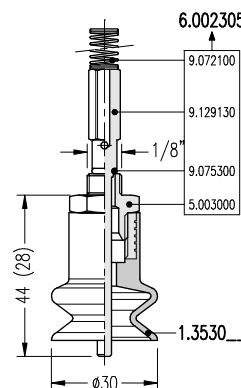
Cod: 1.3530__ + 5.004010



VENTOSA + SUPPORTO VALVOLA

Cod: 1.3530__ + 6.002305

A RICHIESTA
ON REQUEST



Ventosa 1.3540

ventosa a soffiETTO 40 mm



Codice: 1.3540__

Diametro: 40 mm

Portata: 28 N

Corsa: 9 mm

Mescole: A3 - E2

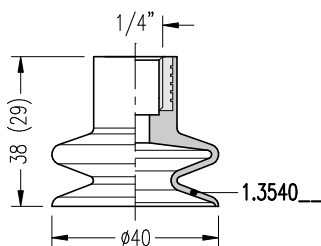
Durezza: 40 - 60 Sh.

Componenti: Gomma - Alluminio

Attacchi: 5.003000 - 5.004000 / 5.003010 - 5.004010

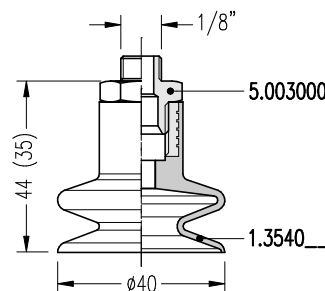
VENTOSA

Cod: 1.3540__



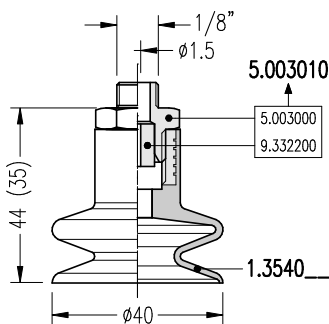
VENTOSA + SUPPORTO

Cod: 1.3540__ + 5.003000



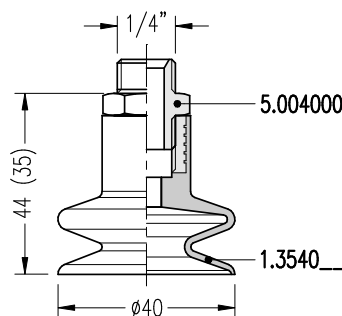
VENTOSA + SUPPORTO (con boccola strozzatrice)

Cod: 1.3540__ + 5.003010



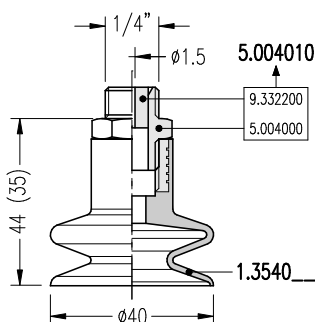
VENTOSA + SUPPORTO

Cod: 1.3540__ + 5.004000



VENTOSA + SUPPORTO (con boccola strozzatrice)

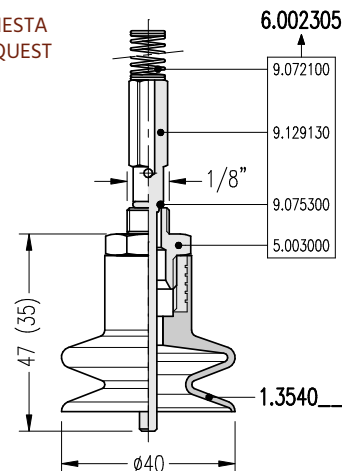
Cod: 1.3540__ + 5.004010



VENTOSA + SUPPORTO VALVOLA

Cod: 1.3540__ + 6.002305

A RICHIESTA
ON REQUEST



Ventosa 1.3550

ventosa a soffietto 50 mm



Codice: 1.3550__

Diametro: 50 mm

Portata: 45 N

Corsa: 12 mm

Mescole: A3 - E2

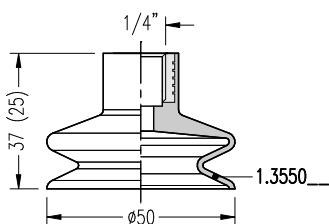
Durezza: 40 - 60 Sh.

Componenti: Gomma - Alluminio

Attacchi: 5.003000 - 5.004000 / 5.003010 - 5.004010

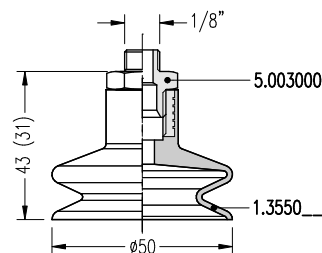
VENTOSA

Cod: 1.3550__



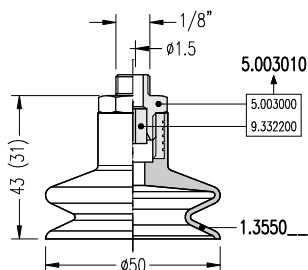
VENTOSA + SUPPORTO

Cod: 1.3550__ + 5.003000



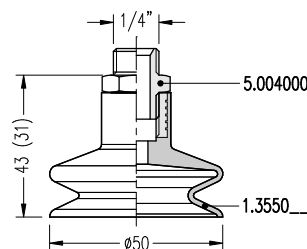
VENTOSA + SUPPORTO (con boccola strozzatrice)

Cod: 1.3550__ + 5.003010



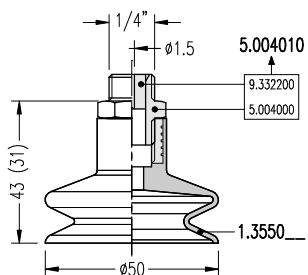
VENTOSA + SUPPORTO

Cod: 1.3550__ + 5.004000



VENTOSA + SUPPORTO (con boccola strozzatrice)

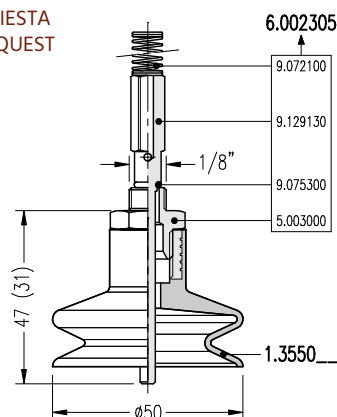
Cod: 1.3550__ + 5.004010



VENTOSA + SUPPORTO VALVOLA

Cod: 1.3550__ + 6.002305

A RICHIESTA
ON REQUEST



Ventosa 1.3562

ventosa a soffietto 60 mm



Codice: 1.3562__

Diametro: 60 mm

Portata: 69 N

Corsa: 15 mm

Mescole: A3 - E2

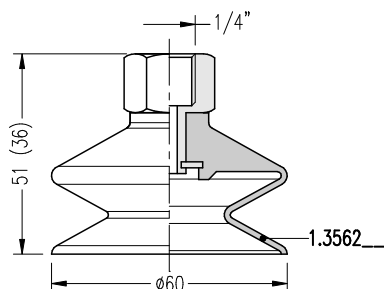
Durezza: 40 - 60 Sh.

Componenti: Gomma - Alluminio

Attacchi: 5.004000 - 5.004010

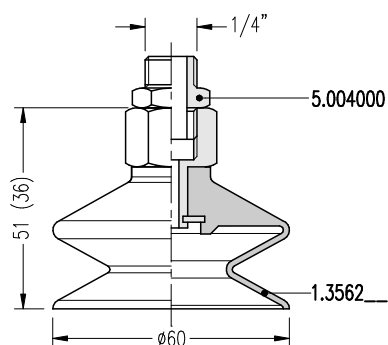
VENTOSA

Cod: 1.3562__



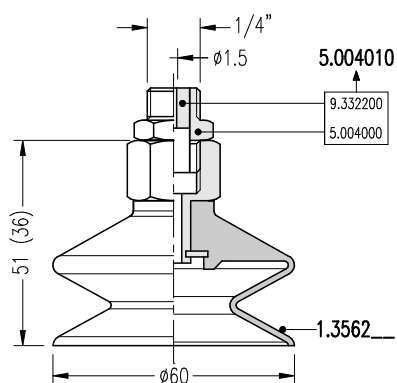
VENTOSA + SUPPORTO

Cod: 1.3562__ + 5.004000



VENTOSA + SUPPORTO (con boccola strozzatrice)

Cod: 1.3562__ + 5.004010



VENTOSE A SOFFIETTO

Ventosa 1.3586

ventosa a soffietto 86 mm

Codice: 1.3586__

Diametro: 86 mm

Portata: 133 N

Corsa: 17 mm

Mescole: Tutte le mescole*

Durezza: 40 - 60 Sh.

Componenti: Gomma - Alluminio

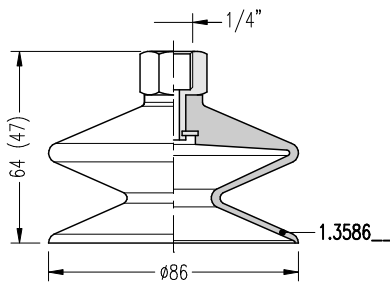
Attacchi: 5.004000 - 5.004010



*riferirsi alla tabella a pagina 16

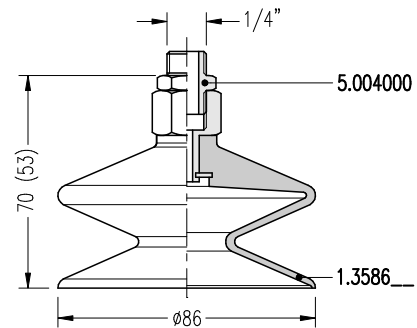
VENTOSA

Cod: 1.3586__



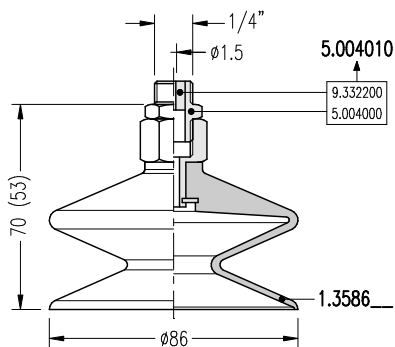
VENTOSA + SUPPORTO

Cod: 1.3586__ + 5.004000



VENTOSA + SUPPORTO (con boccola strozzatrice)

Cod: 1.3586__ + 5.004010



Ventosa 1.3650

ventosa a soffiETTO 148 mm



Codice: 1.3650__

Diametro: 148 mm

Portata: 394 N

Corsa: 28 mm

Mescole: A3 - E2

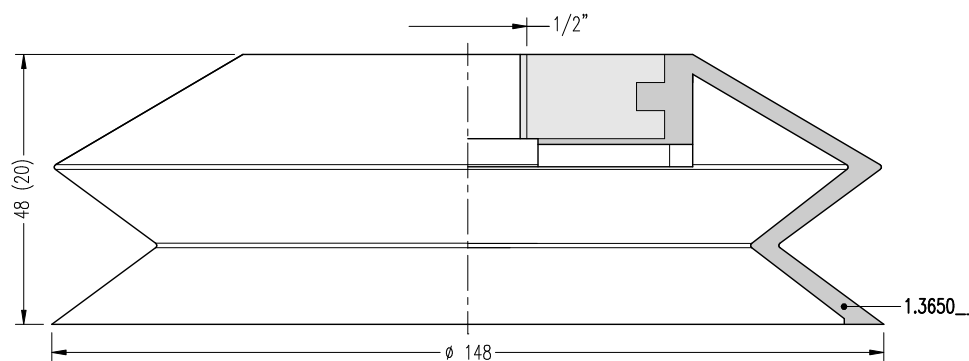
Durezza: 40 - 60 Sh.

Componenti: Gomma - Alluminio

Attacchi: ----

VENTOSA + SUPPORTO

Cod: 1.3562__



Ventosa 1.4110

ventosa a coppa 110 mm con supporto vulcanizzato

Codice: 1.4110__

Diametro: 110 mm

Portata: 217,8 N

Corsa: 12 mm

Mescole: A1 - A2 - A3 - A5 - M1

D1 - D2 - B1 - B3 - B4 - E2 - L4 - L5 - L6

Durezza: 40 - 60 Sh.

Componenti: Gomma - Alluminio

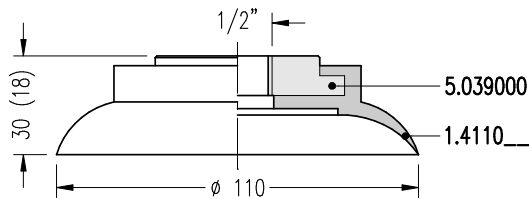
Attacchi: 5.049000

Attacco con valvola: 5.039500

VENTOSA CON SUPPORTO VULCANIZZATO

Cod: 1.4110__ + 5.039000

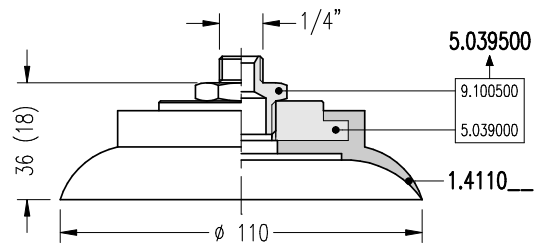
A RICHIESTA
ON REQUEST



VENTOSA CON SUPPORTO VULCANIZZATO

Cod: 1.4110__ + 5.039500

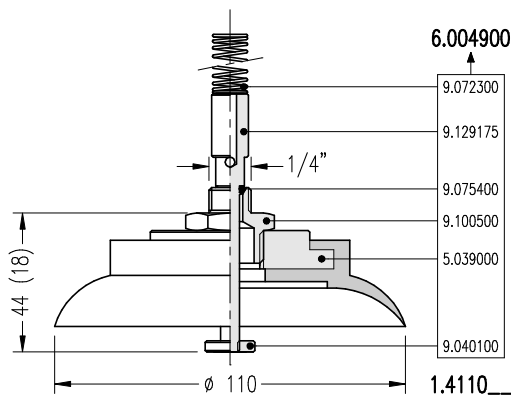
A RICHIESTA
ON REQUEST



VENTOSA CON SUPPORTO VALVOLA

Cod: 1.4110__ + 6.004900

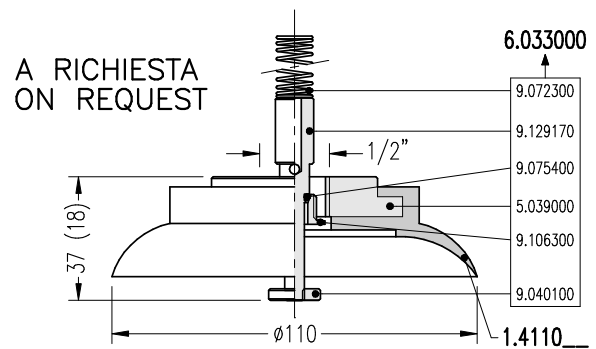
A RICHIESTA
ON REQUEST



VENTOSA CON SUPPORTO VALVOLA

Cod: 1.4110__ + 6.033000

A RICHIESTA
ON REQUEST



Ventosa 1.4170

ventosa a coppa 170 mm con supporto vulcanizzato



Codice: 1.4170__

Diametro: 170 mm

Portata: 520 N

Corsa: 12 mm

Mescole: A1 - A2 - A3 - A5 - M1

D1 - D2 - B1 - B3 - B4 - E2 - L4 - L5 - L6

Durezza: 40 - 60 Sh.

Componenti: Gomma - Alluminio

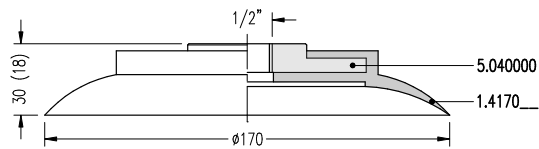
Attacchi: 5.040500

Attacco con valvola: 6.005000

VENTOSA CON SUPPORTO VULCANIZZATO

Cod: 1.4170__ + 5.040000

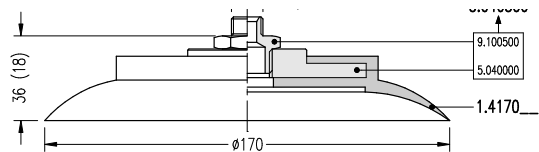
A RICHIESTA
ON REQUEST



VENTOSA CON SUPPORTO VULCANIZZATO

Cod: 1.4170__ + 5.040500

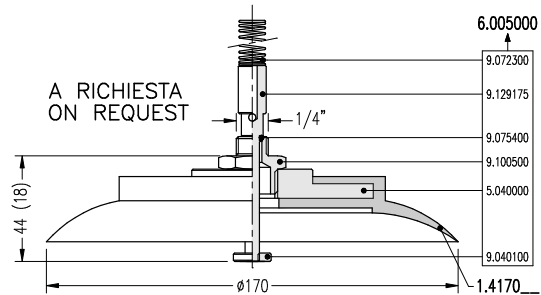
A RICHIESTA
ON REQUEST



VENTOSA + SUPPORTO VALVOLA

Cod: 1.4170__ + 5.005000

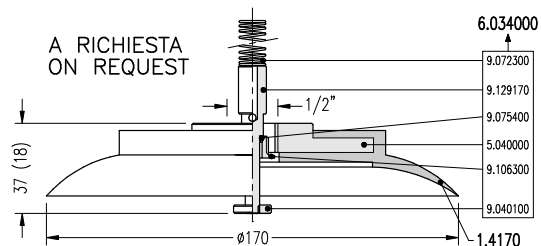
A RICHIESTA
ON REQUEST



VENTOSA + SUPPORTO VALVOLA

Cod: 1.4170__ + 6.034000

A RICHIESTA
ON REQUEST



VENTOSE A COPPA

Ventosa 1.5060

ventosa a coppa 110 mm con supporto vulcanizzato



Codice: 1.5060__

Diametro: 62 mm / 50 mm

Corsa: 7 mm

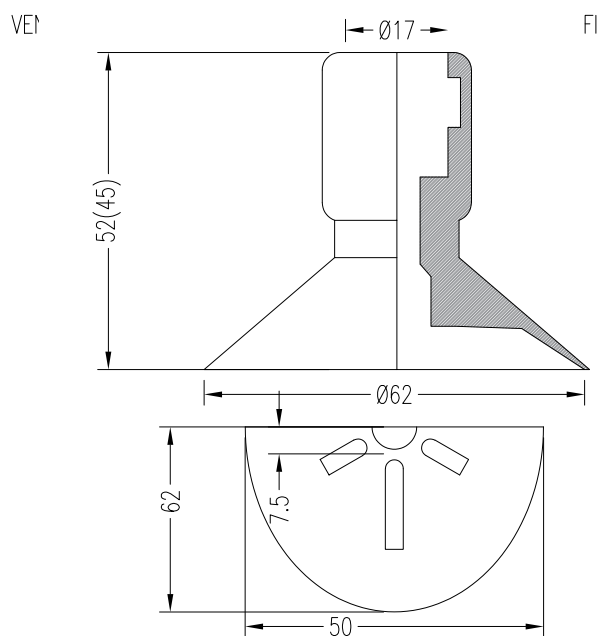
Mescole: Tutte le mescole *

*riferirsi alla tabella a pagina 16

VENTOSA

Cod: 1.5060__

VENTOSE A COPPA



Ventosa 1.5220

ventosa a coppa 220 mm con supporto vulcanizzato



Codice: 1.5220__

Diametro: 220 mm

Portata: 887 N

Corsa: 3 mm

Mescole: A3 - E2

Durezza: 40 - 60 Sh.

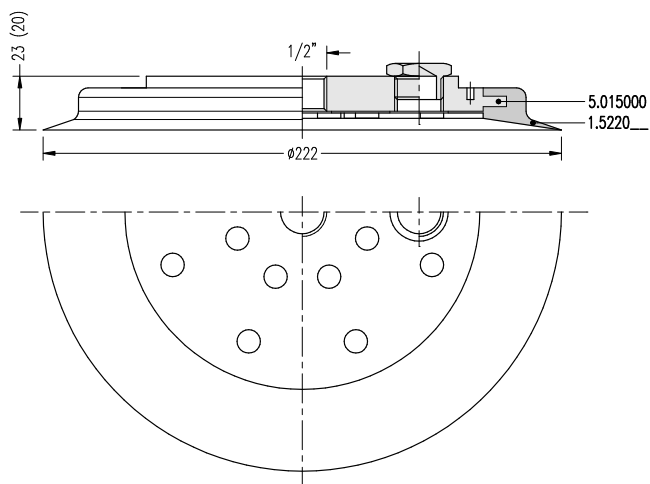
Componenti: Gomma - Alluminio

Attacco con valvola: 6.035000

VENTOSA CON SUPPORTO VULCANIZZATO

Cod: 1.5220__ + 5.015000

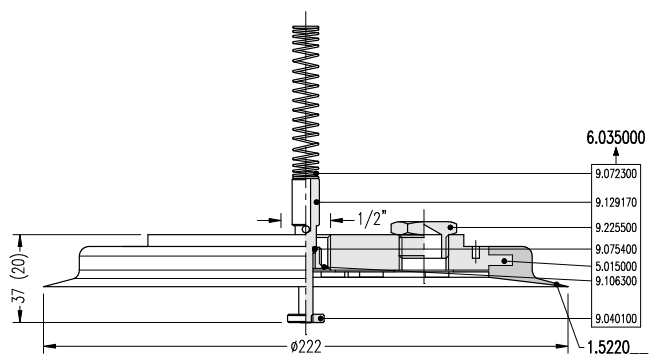
A RICHIESTA
ON REQUEST



VENTOSA CON SUPPORTO VULCANIZZATO

Cod: 1.5220__ + 5.015000

A RICHIESTA
ON REQUEST



Ventosa 1.5255

ventosa a coppa 255 mm con supporto vulcanizzato

Codice: 1.5255__

Diametro: 255 mm

Portata: 1170 N

Corsa: 6 mm

Mescole: A3 - E2

Durezza: 40 - 60 Sha

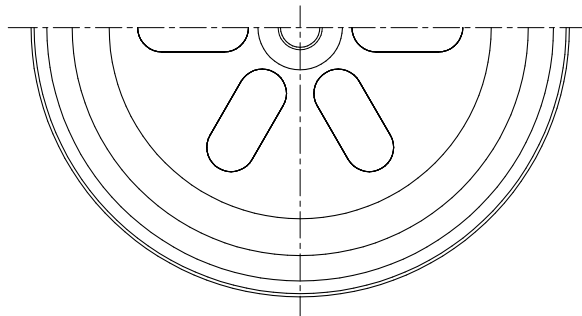
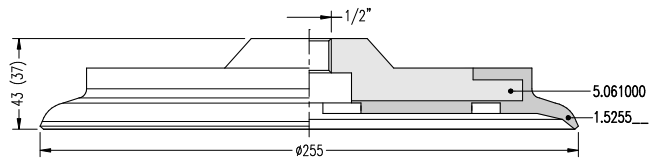
Componenti: Gomma - Alluminio

Attacchi: ---

Attacco con valvola: 6.035900

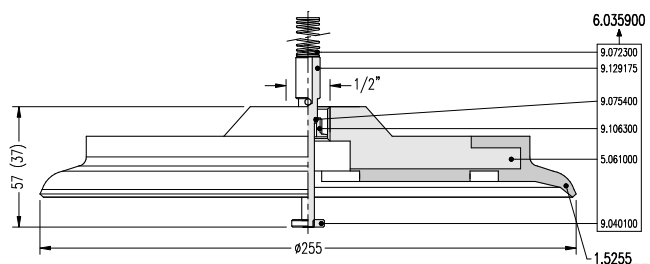
VENTOSA CON SUPPORTO VULCANIZZATO

Cod: 1.5225__ + 5.061000



VENTOSA CON SUPPORTO VULCANIZZATO

Cod: 1.5220__ + 6.035900



VENTOSE A COPPA

Ventosa 1.5285

ventosa a coppa 285 mm con supporto vulcanizzato

Codice: 1.5285__

Diametro: 285 mm

Portata: 1462 N

Corsa: 3 mm

Mescole: A3 - E2

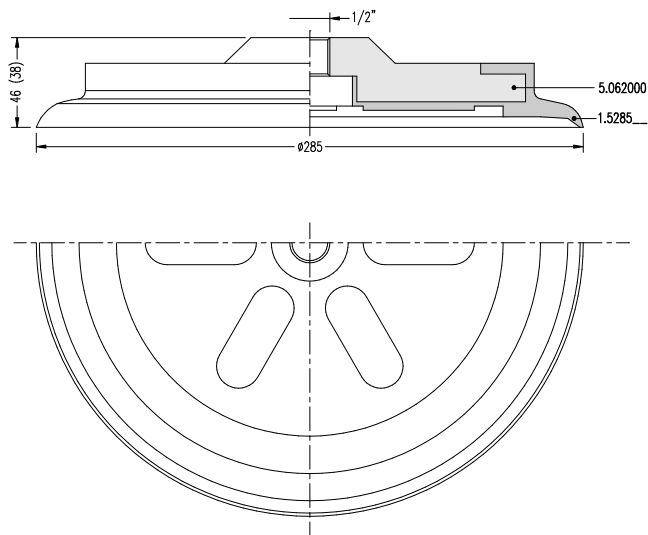
Durezza: 40 - 60 Sha

Componenti: Gomma - Alluminio

Attacco con valvola: 6.036000

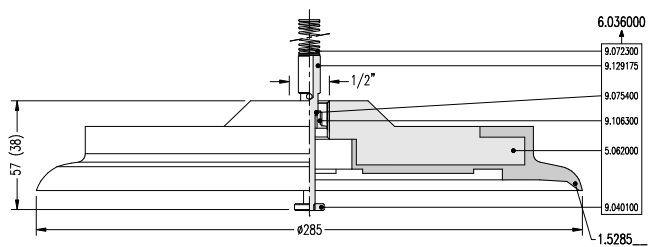
VENTOSA CON SUPPORTO VULCANIZZATO

Cod: 1.5285__ + 5.062000



VENTOSA CON SUPPORTO VULCANIZZATO

Cod: 1.5285__ + 6.036000



Ventosa 2.1075

ventosa piana 75 mm

Codice: 2.1075__

Diametro: 75 mm

Portata: 106,7 N

Corsa: 6 mm

Mescole: A3 - E2

Durezza: 40 - 60 Sha

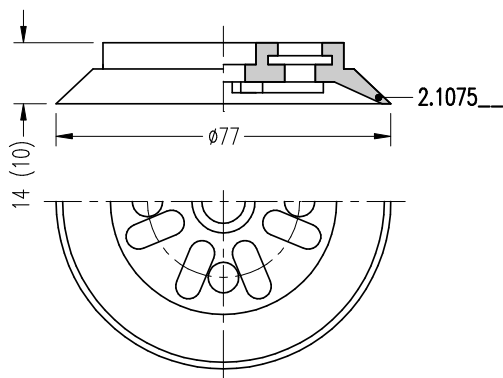
Componenti: Gomma - Alluminio

Attacchi: 5.025500

VENTOSA

Cod: 2.1075__

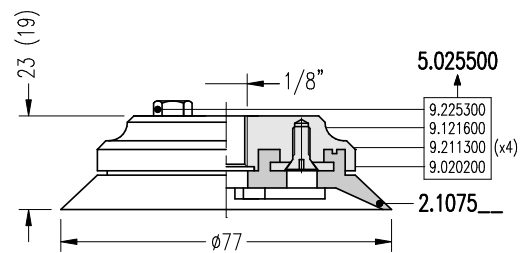
A RICHIESTA
ON REQUEST



VENTOSA + SUPPORTO

Cod: 2.1075__ + 5.025500

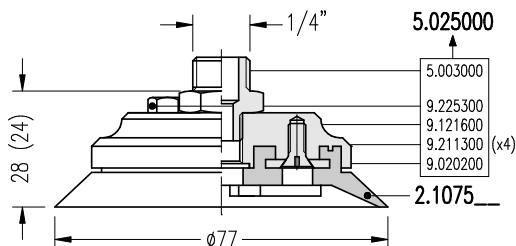
A RICHIESTA
ON REQUEST



VENTOSA + SUPPORTO

Cod: 2.1075__ + 5.025000

A RICHIESTA
ON REQUEST



Ventosa 2.1110

ventosa piana 110 mm

Codice: 2.1110__

Diametro: 110 mm

Portata: 233,9 N

Mescole: C1 - E2

Durezza: 40 - 60 Sha

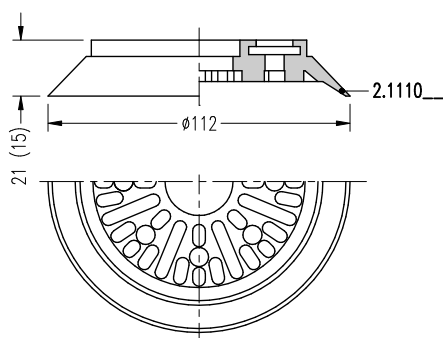
Componenti: Gomma - Alluminio

Attacco con valvola: 6.049000 - 6.047000

VENTOSA

Cod: 2.1110__

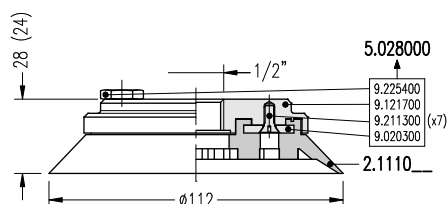
A RICHIESTA
ON REQUEST



VENTOSA + SUPPORTO

Cod: 2.1110__ + 5.028000

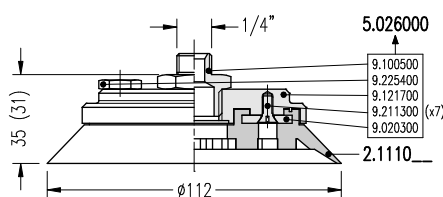
A RICHIESTA
ON REQUEST



VENTOSA + SUPPORTO

Cod: 2.1110__ + 5.026000

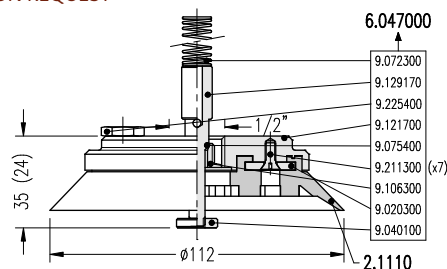
A RICHIESTA
ON REQUEST



VENTOSA + SUPPORTO VALVOLA

Cod: 2.1110__ + 6.047000

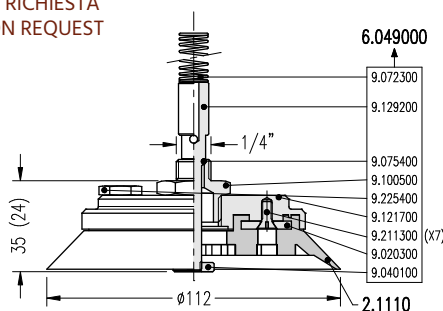
A RICHIESTA
ON REQUEST



VENTOSA + SUPPORTO VALVOLA

Cod: 2.1110__ + 6.049000

A RICHIESTA
ON REQUEST



Ventosa 2.1150

ventosa piana 150 mm

Codice: 2.1150__

Diametro: 150 mm

Portata: 443,7 N

Mescole: C1 - E2

Durezza: 40 - 60 Sha

Componenti: Gomma - Alluminio

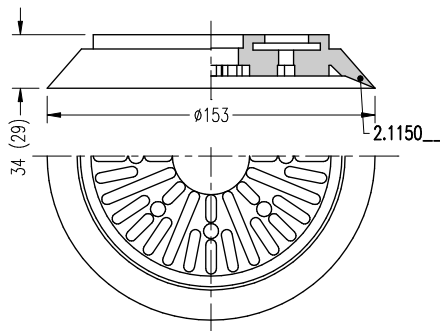
Attacchi: 5.029000 - 5.027000

Attacco con valvola: 6.048000 - 6.050000

VENTOSA

Cod: 2.1150__

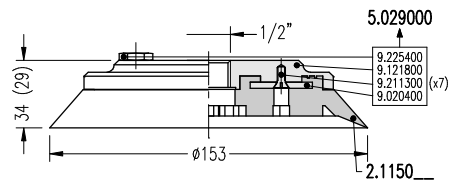
A RICHIESTA
ON REQUEST



VENTOSA + SUPPORTO

Cod: 2.1150__ + 5.029000

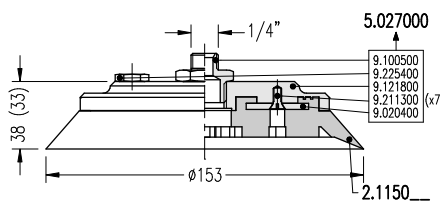
A RICHIESTA
ON REQUEST



VENTOSA + SUPPORTO

Cod: 2.1150__ + 5.027000

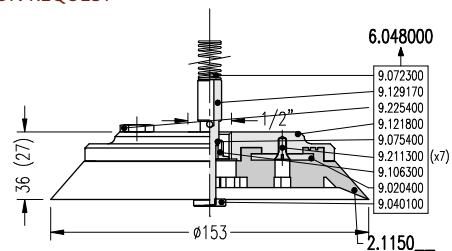
A RICHIESTA
ON REQUEST



VENTOSA + SUPPORTO VALVOLA

Cod: 2.1150__ + 6.048000

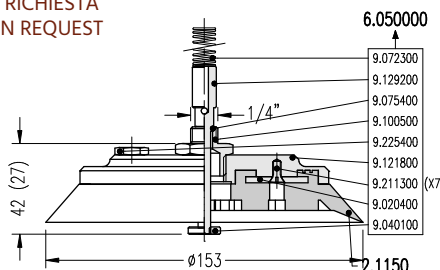
A RICHIESTA
ON REQUEST



VENTOSA + SUPPORTO VALVOLA

Cod: 2.1150__ + 6.050000

A RICHIESTA
ON REQUEST



Ventosa 2.3075

ventosa a soffietto 75 mm

Codice: 2.3075__

Diametro: 75 mm

Portata: 106,7 N

Mescole: C1 - E2

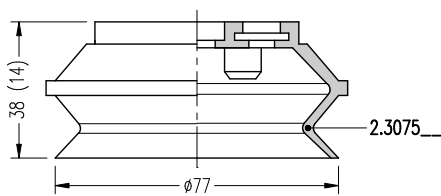
Componenti: Gomma - Metallo

Attacchi: 5.025500 - 5.025000

VENTOSA

Cod: 2.3075__

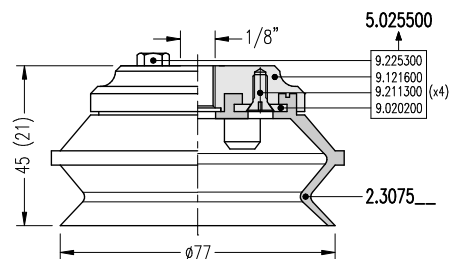
A RICHIESTA
ON REQUEST



VENTOSA + SUPPORTO

Cod: 2.3075__ + 5.025500

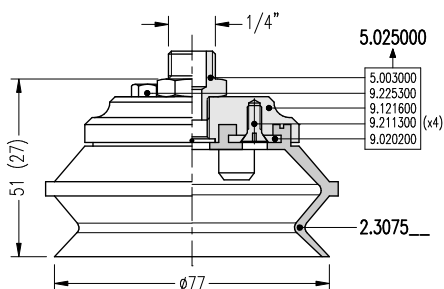
A RICHIESTA
ON REQUEST



VENTOSA + SUPPORTO

Cod: 2.3075__ + 5.025000

A RICHIESTA
ON REQUEST



Ventosa 2.3110

ventosa a soffietto 110 mm

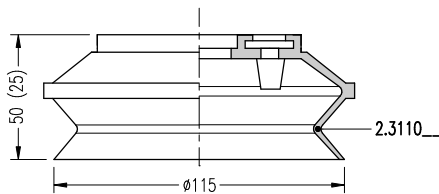
Codice: 2.3110__
Diametro: 110 mm
Portata: 233,9 N
Corsa: 25 mm

Mescole: C1 - E2
Componenti: Gomma - Metallo
Attacchi: 5.028000 - 5.026000

VENTOSA

Cod: 2.3110__

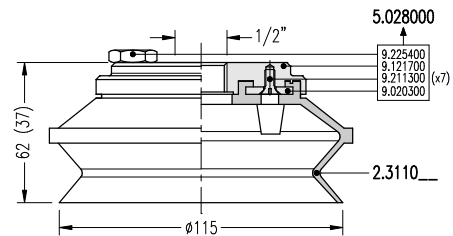
A RICHIESTA
 ON REQUEST



VENTOSA + SUPPORTO

Cod: 2.3110__ + 5.028000

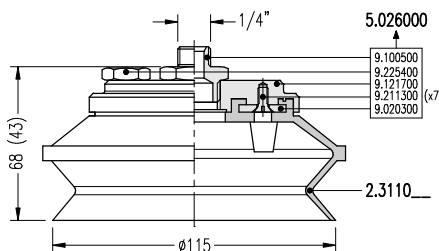
A RICHIESTA
 ON REQUEST



VENTOSA + SUPPORTO

Cod: 2.3110__ + 5.026000

A RICHIESTA
 ON REQUEST



VENTOSE A SOFFIETTO

Ventosa 2.3150

ventosa a soffiETTO 150 mm

Codice: 2.3150__

Diametro: 150 mm

Portata: 443,7 N

Corsa: 45 mm

Mescole: C1 - E2

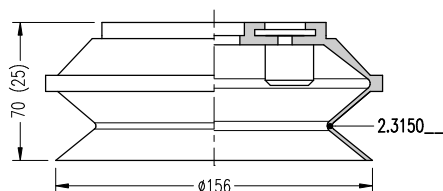
Componenti: Gomma - Metallo

Attacchi: 5.029000 - 5.027000

VENTOSA

Cod: 2.3150__

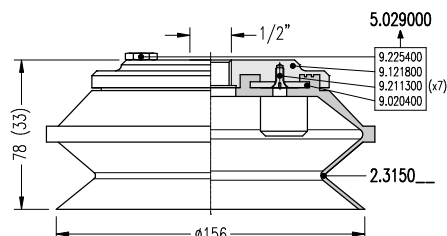
A RICHIESTA
ON REQUEST



VENTOSA + SUPPORTO

Cod: 2.3150__ + 5.029000

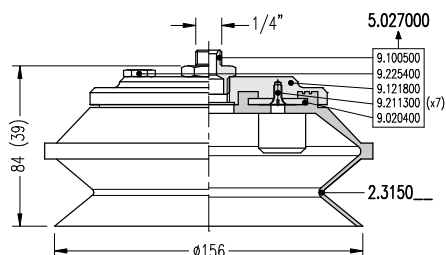
A RICHIESTA
ON REQUEST



VENTOSA + SUPPORTO

Cod: 2.3150__ + 5.027000

A RICHIESTA
ON REQUEST



Ventosa 2008

ventosa piana 20 mm

Codice: 2008__

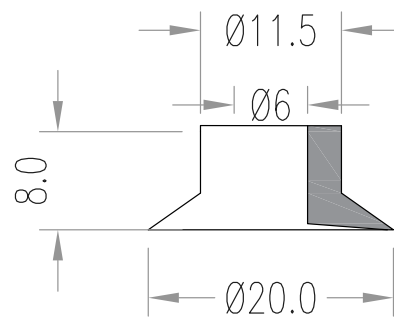
Diametro: 20 mm

Mescole: Tutte le mescole *

*riferirsi alla tabella a pagina 16

VENTOSA

Cod: 2008__



Ventosa 2718

ventosa piana 27 mm

Codice: 2718__

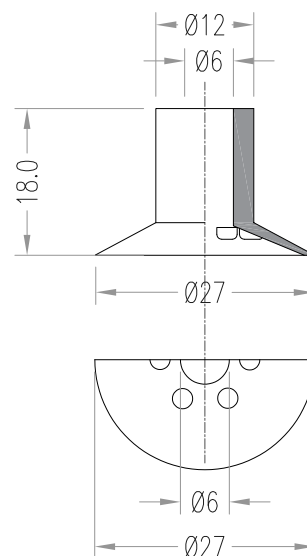
Diametro: 27 mm

Mescole: Tutte le mescole *

*riferirsi alla tabella a pagina 16

VENTOSA

Cod: 2718__



Ventosa 2724

ventosa piana 26 mm

Codice: 2724__

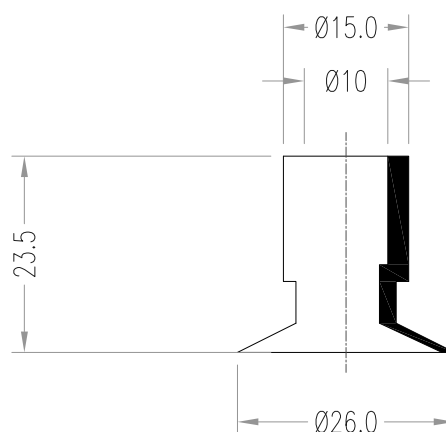
Diametro: 26 mm

Mescole: Tutte le mescole *

*riferirsi alla tabella a pagina 16

VENTOSA

Cod: 2724__



Ventosa 3125

ventosa piana 31 mm

Codice: 3125__

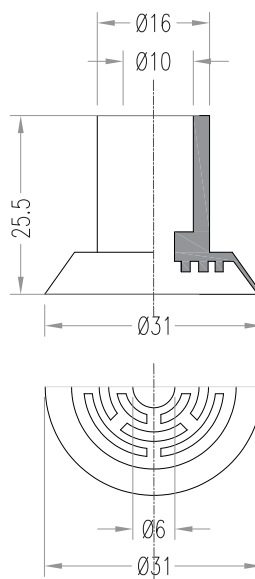
Diametro: 31 mm

Mescole: Tutte le mescole *

*riferirsi alla tabella a pagina 16

VENTOSA

Cod: 3125__



Ventosa 3519

ventosa piana 35 mm

Codice: 3519__

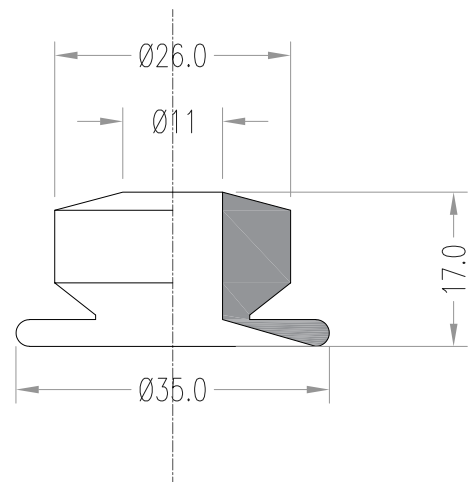
Diametro: 35mm

Mescole: Tutte le mescole *

*riferirsi alla tabella a pagina 16

VENTOSA

Cod: 3519__



Ventosa 3830

ventosa piana 38 mm

Codice: 3830__

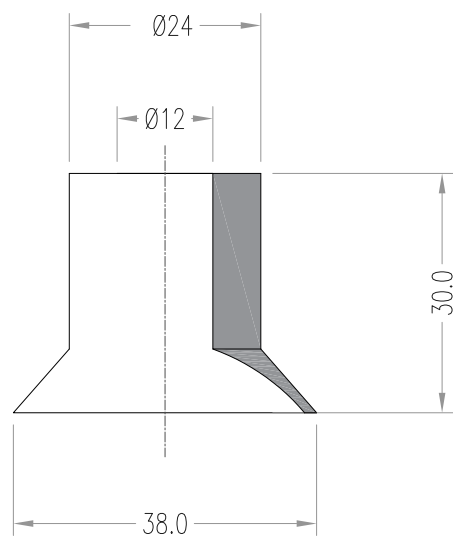
Diametro: 38 mm

Mescole: Tutte le mescole *

*riferirsi alla tabella a pagina 16

VENTOSA

Cod: 3830__



Ventosa 4317

ventosa piana 43 mm

Codice: 4317__

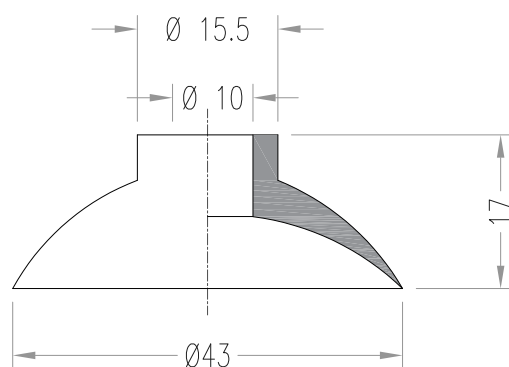
Diametro: 43 mm

Mescole: Tutte le mescole *

*riferirsi alla tabella a pagina 16

VENTOSA

Cod: 4317__



VENTOSE PIANE

Ventosa 4317

ventosa piana 43 mm

Codice: 4317__

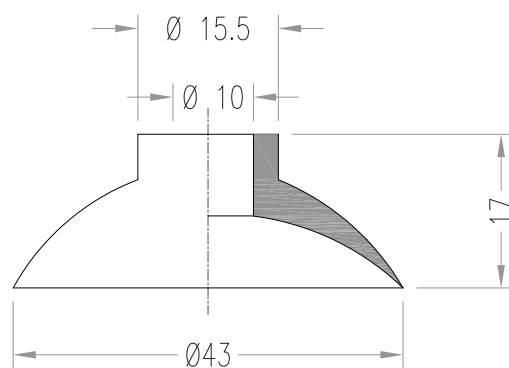
Diametro: 43 mm

Mescole: Tutte le mescole *

*riferirsi alla tabella a pagina 16

VENTOSA

Cod: 4317__



Ventosa 4750

ventosa piana 47 mm

Codice: 4750__

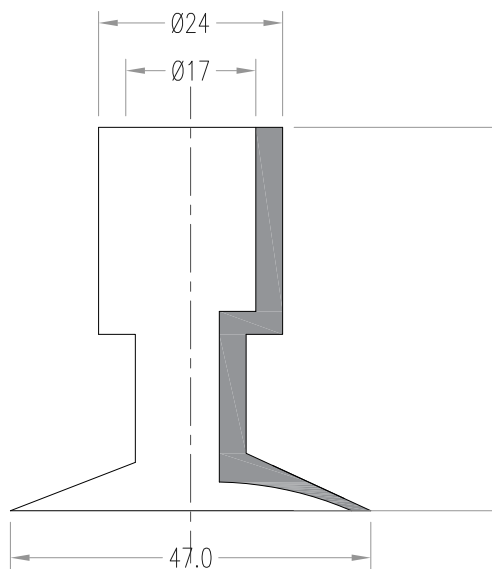
Diametro: 47 mm

Mescole: Tutte le mescole *

*riferirsi alla tabella a pagina 16

VENTOSA

Cod: 4750__



Ventosa 6200

ventosa piana 64 mm

Codice: 6200__

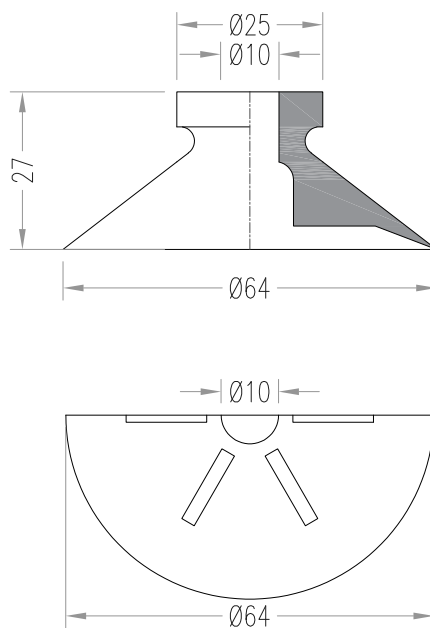
Diametro: 64 mm

Mescole: Tutte le mescole *

*riferirsi alla tabella a pagina 16

VENTOSA

Cod: 6200__



Ventosa 6444

ventosa piana 64 mm

Codice: 6444__

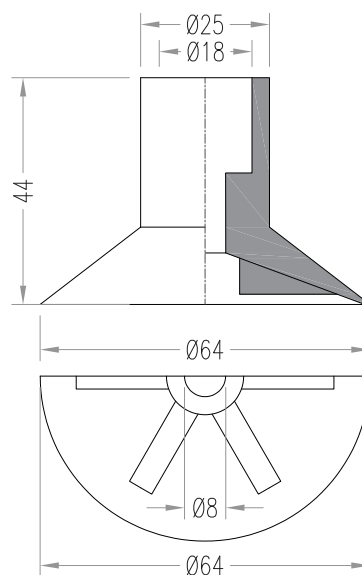
Diametro: 64 mm

Mescole: Tutte le mescole *

*riferirsi alla tabella a pagina 16

VENTOSA

Cod: 6444__



Ventosa 19204

ventosa piana 19 mm

Codice: 19204__

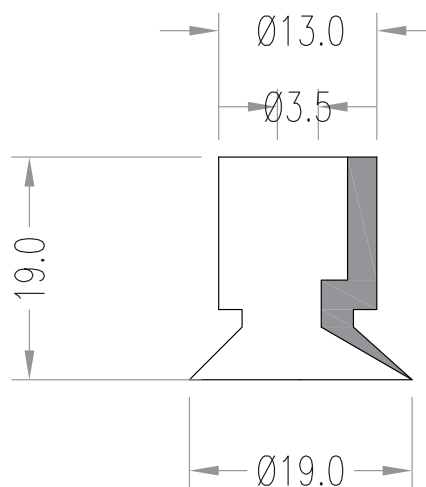
Diametro: 19 mm

Mescole: Tutte le mescole *

*riferirsi alla tabella a pagina 16

VENTOSA

Cod: 19204__



Ventosa 1.2082

ventosa a coppa 82 mm

Codice: 1.2082__

Diametro: 82 mm

Portata: 120 N

Corsa: 4mm

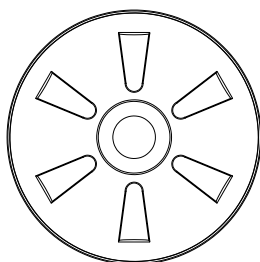
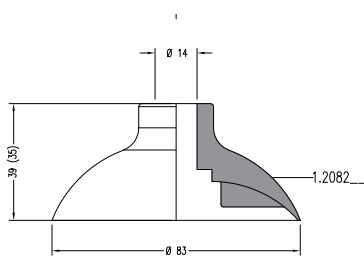
Componenti: Gomma

Mescole: Tutte le mescole *

*riferirsi alla tabella a pagina 16

VENTOSA

Cod: 1.2082__



Ventosa 1.140140

ventosa rettangolare 140 x 140 mm

Codice: 1.140140__

Dimensione: 140 x 140 mm

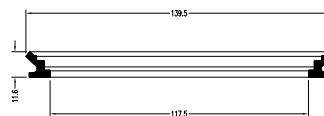
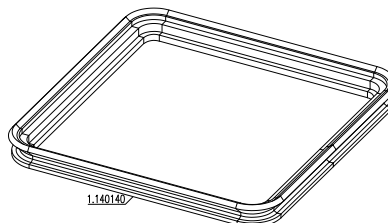
Componenti: Gomma

Mescole: Tutte le mescole *

*riferirsi alla tabella a pagina 16

VENTOSA

Cod: 1.140140__



Ventosa 1.140050

ventosa rettangolare 140 x 50 mm

Codice: 1.140050__

Dimensione: 140 x 50 mm

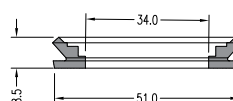
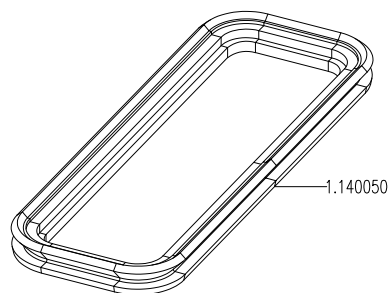
Componenti: Gomma

Mescole: Tutte le mescole *

*riferirsi alla tabella a pagina 16

VENTOSA

Cod: 1.140050__



Portaventosa 8.12_100

portaventosa M5

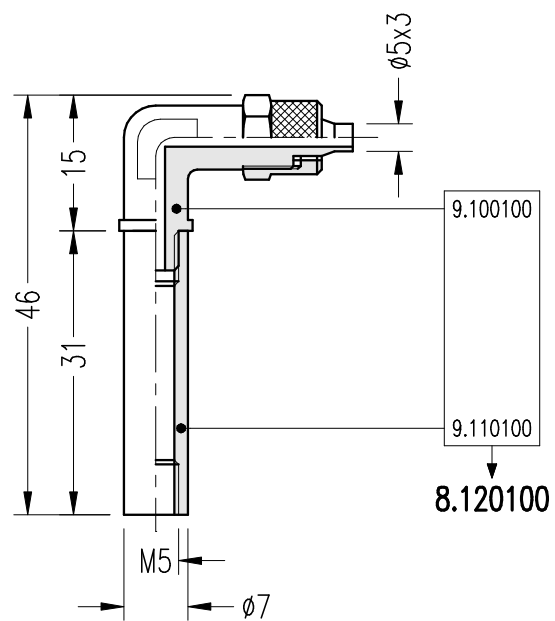
Codice: 8.12_100

Diametro stelo: 7 x 5 mm

Altezza stelo: 31 mm

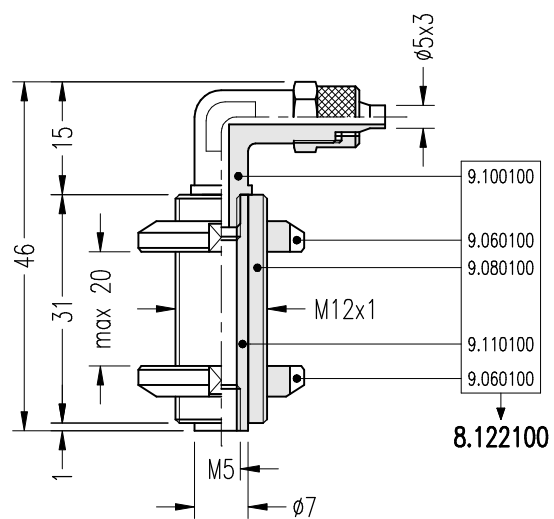
PORTAVENTOSA

Cod: 8.120100



PORTAVENTOSA

Cod: 8.122100



Portaventosa 8.12_300

portaventosa M5

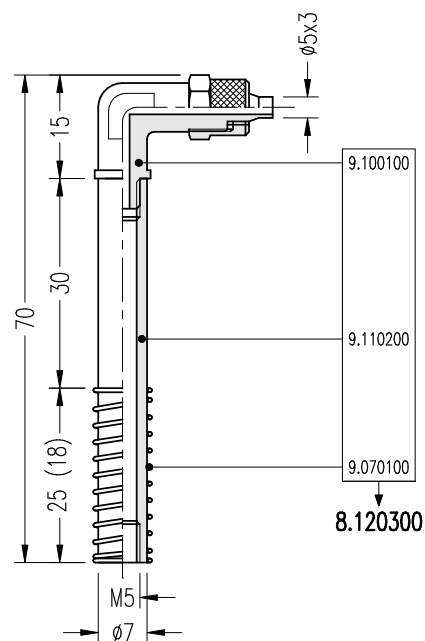
Codice: 8.12_300

Diametro stelo: 7 x 5 mm

Altezza stelo: 55 mm

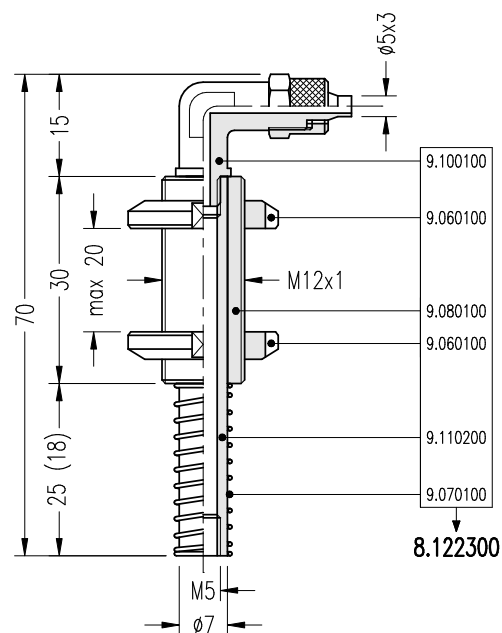
PORTAVENTOSA

Cod: 8.120300



PORTAVENTOSA

Cod: 8.122300



Portaventosa 8.22_100

portaventosa 1/8"

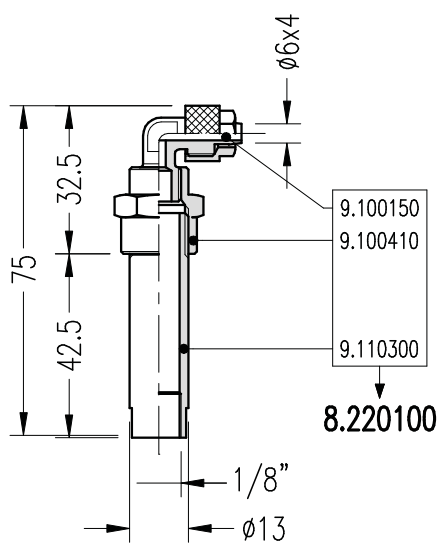
Codice: 8.22_100

Diametro stelo: 13 x 9 mm

Altezza stelo: 52 mm

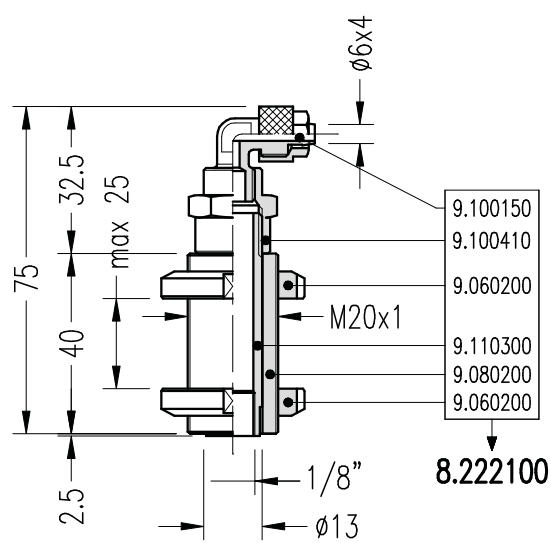
PORTAVENTOSA

Cod: 8.220100



PORTAVENTOSA

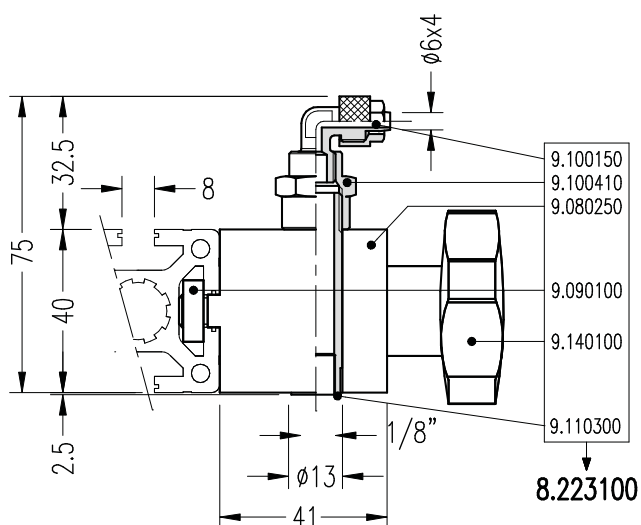
Cod: 8.222100



PORTAVENTOSA

Cod: 8.223100

A RICHIESTA
ON REQUEST



PORTAVENTOSA

Portaventosa 8.22_300

portaventosa 1/8"

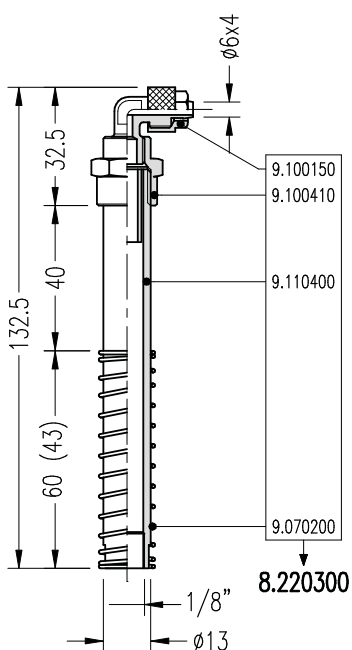
Codice: 8.22_300

Diametro stelo: 13 x 9 mm

Altezza stelo: 110 mm

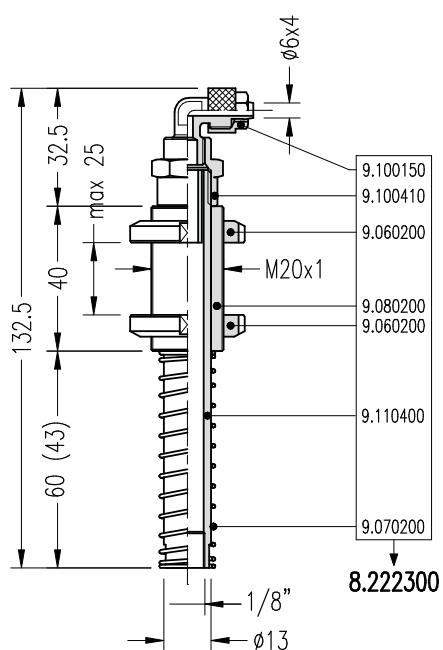
PORTAVENTOSA

Cod: 8.220300



PORTAVENTOSA

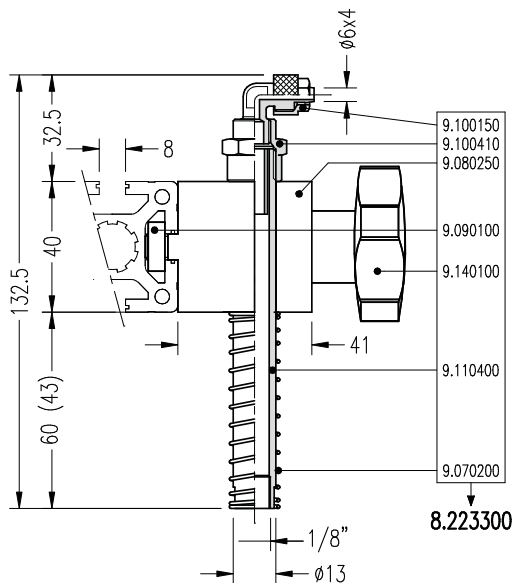
Cod: 8.222300



PORTAVENTOSA

Cod: 8.223300

A RICHIESTA
ON REQUEST



PORTAVENTOSA

Portaventosa 8.22_350

portaventosa 1/8"

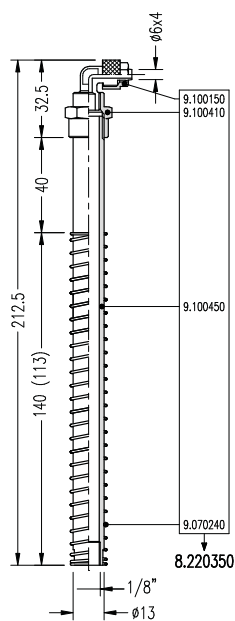
Codice: 8.22_350

Diametro stelo: 13 x 9 mm

Altezza stelo: 190 mm

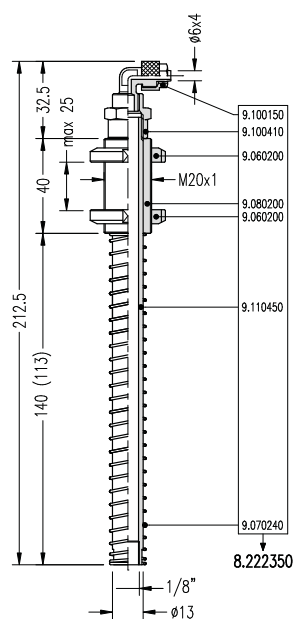
PORTAVENTOSA

Cod: 8.220350



PORTAVENTOSA

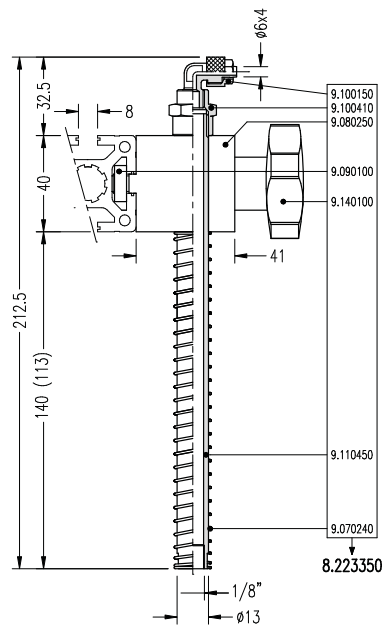
Cod: 8.222350



PORTAVENTOSA

Cod: 8.223350

A RICHIESTA
ON REQUEST



PORTAVENTOSA

Portaventosa 8.32_100

portaventosa 1/4"

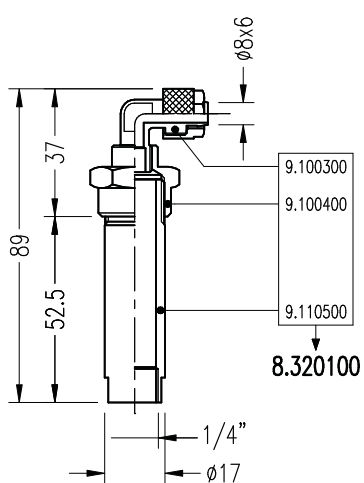
Codice: 8.32_100

Diametro stelo: 17 x 12

Altezza stelo: 63 mm

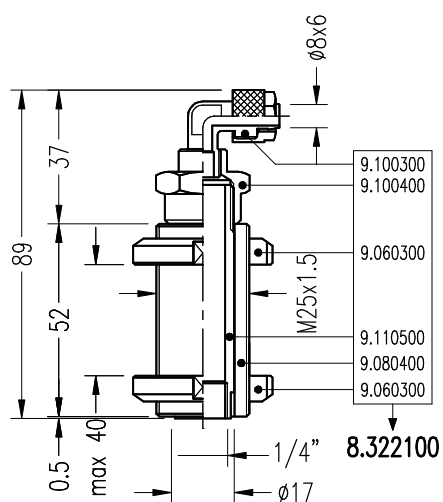
PORTAVENTOSA

Cod: 8.320100



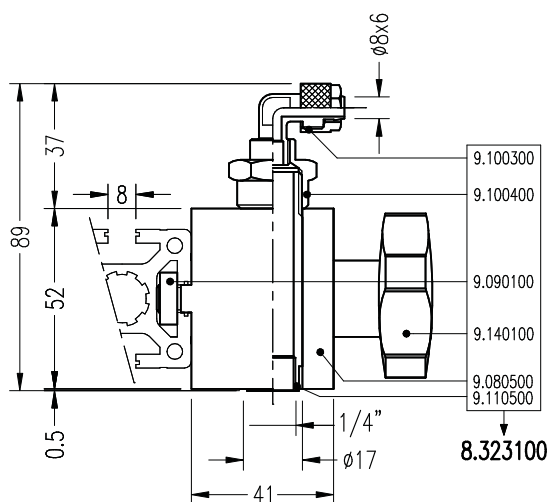
PORTAVENTOSA

Cod: 8.322100



PORTAVENTOSA

Cod: 8.323100



Portaventosa 8.32_200

portaventosa 1/4"

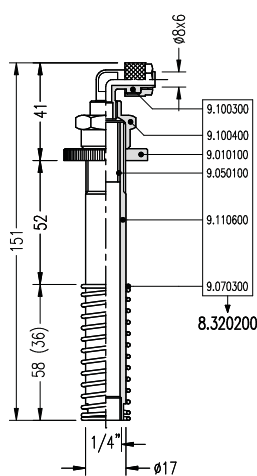
Codice: 8.32_200

Diametro stelo: 17 x 12 mm

Altezza stelo: 125 mm

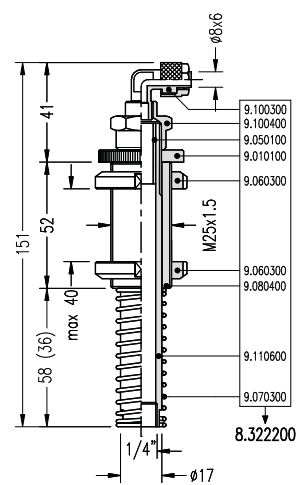
PORTAVENTOSA

Cod: 8.320200



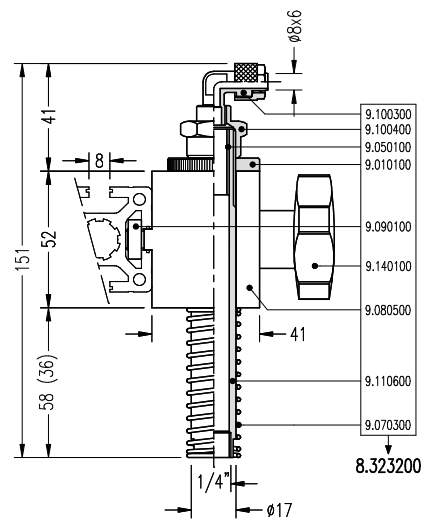
PORTAVENTOSA

Cod: 8.322200



PORTAVENTOSA

Cod: 8.323200



Portaventosa 8.32_300

portaventosa 1/4"

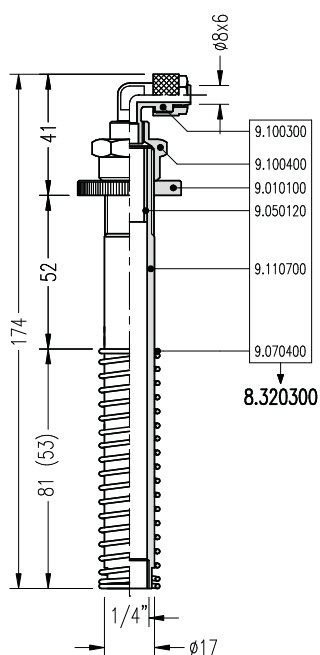
Codice: 8.32_300

Diametro stelo: 17 x 12

Altezza stelo: 150 mm

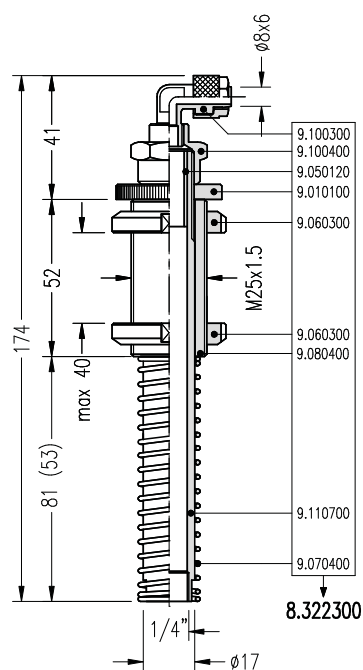
PORTAVENTOSA

Cod: 8.320300



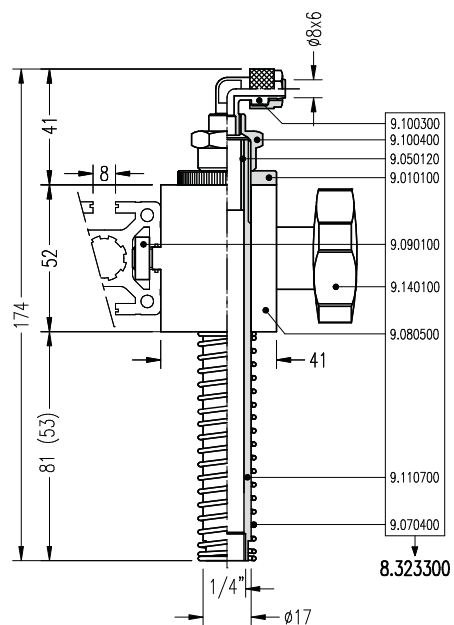
PORTAVENTOSA

Cod: 8.322300



PORTAVENTOSA

Cod: 8.323300



Portaventosa 8.32_400

portaventosa 1/4"

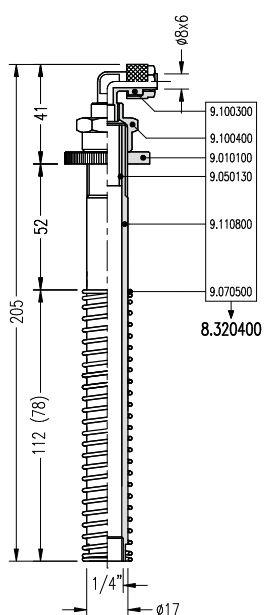
Codice: 8.32_400

Diametro stelo: 17 x 12 mm

Altezza stelo: 180 mm

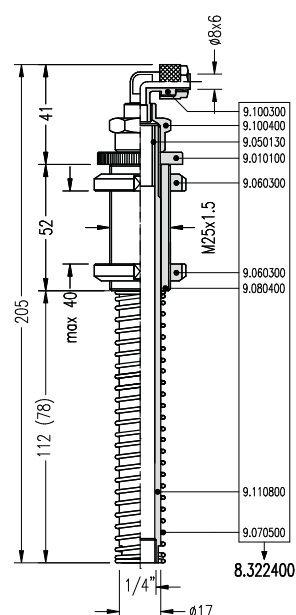
PORTAVENTOSA

Cod: 8.320400



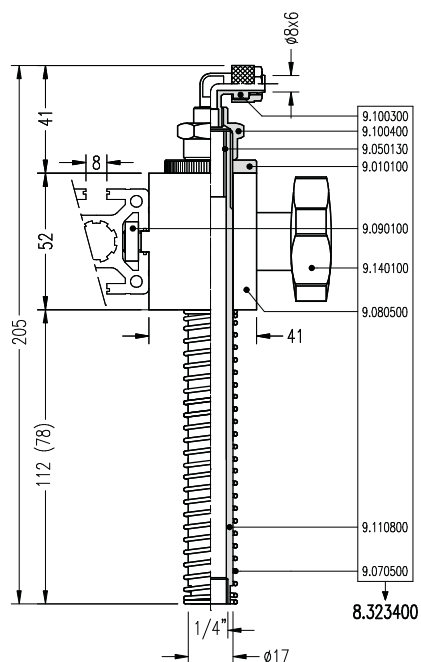
PORTAVENTOSA

Cod: 8.322400



PORTAVENTOSA

Cod: 8.323400



PORTAVENTOSA

Portaventosa 8.32_500

portaventosa 1/4"

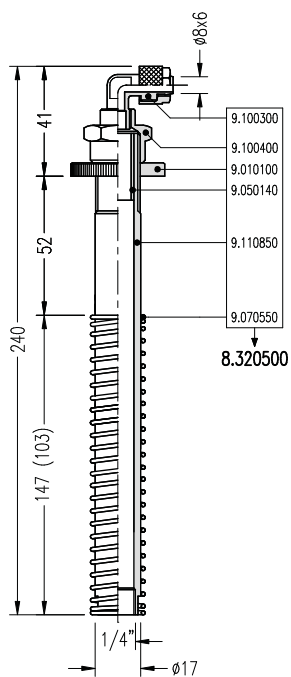
Codice: 8.32_500

Diametro stelo: 17 x 12

Altezza stelo: 215 mm

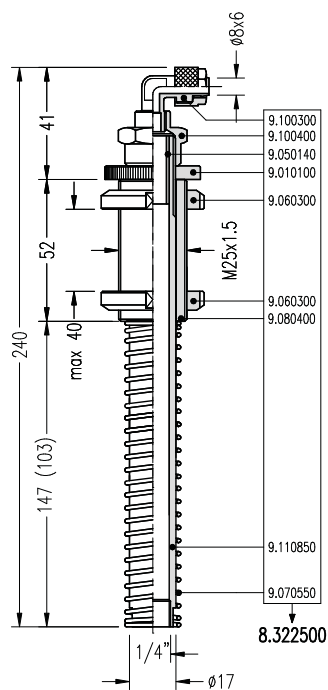
PORTAVENTOSA

Cod: 8.320500



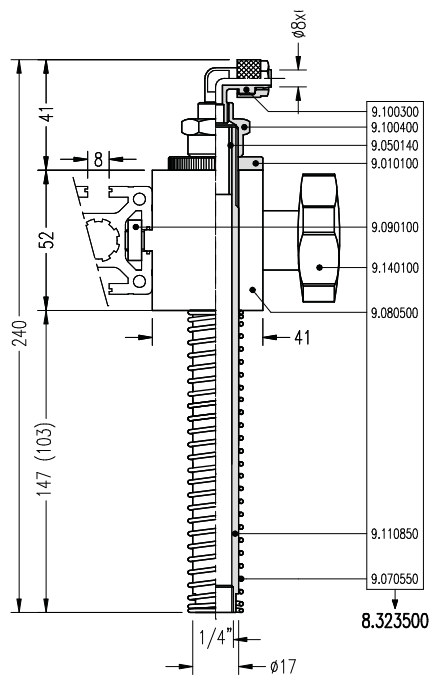
PORTAVENTOSA

Cod: 8.322500



PORTAVENTOSA

Cod: 8.323500



PORTAVENTOSA

Portaventosa 8.51_100

portaventosa 1/2"

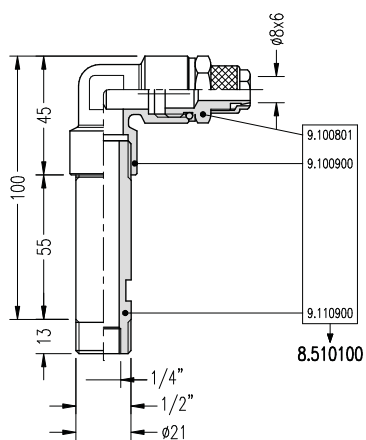
Codice: 8.51_100

Diametro stelo: 21 x 12 mm

Altezza stelo: 81 mm

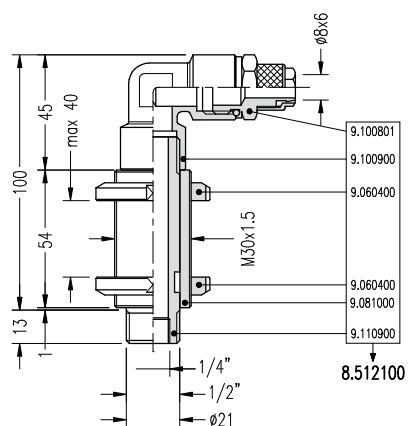
PORTAVENTOSA

Cod: 8.510100



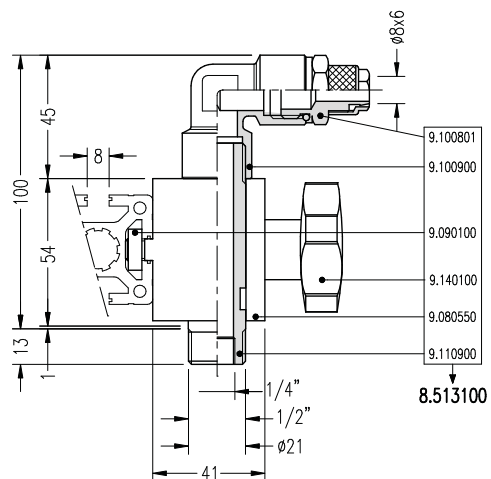
PORTAVENTOSA

Cod: 8.512100



PORTAVENTOSA

Cod: 8.513100



Portaventosa 8.51_300

portaventosa 1/2"

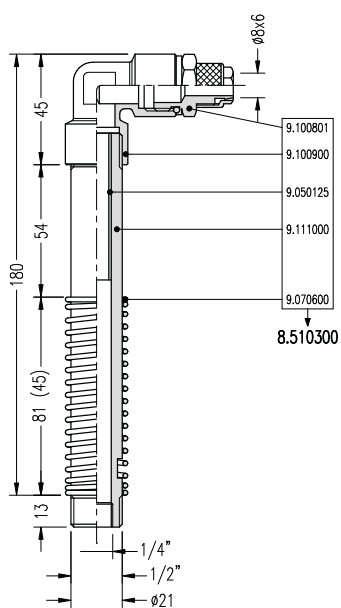
Codice: 8.51_300

Diametro stelo: 21 x 12

Altezza stelo: 61 mm

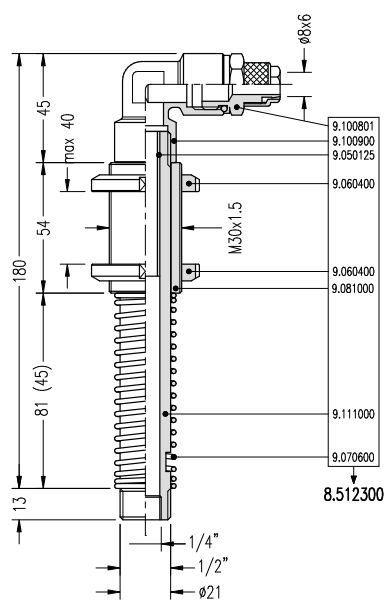
PORTAVENTOSA

Cod: 8.510300



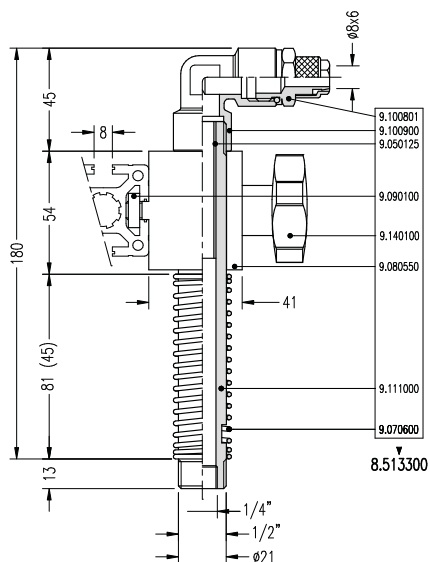
PORTAVENTOSA

Cod: 8.512300



PORTAVENTOSA

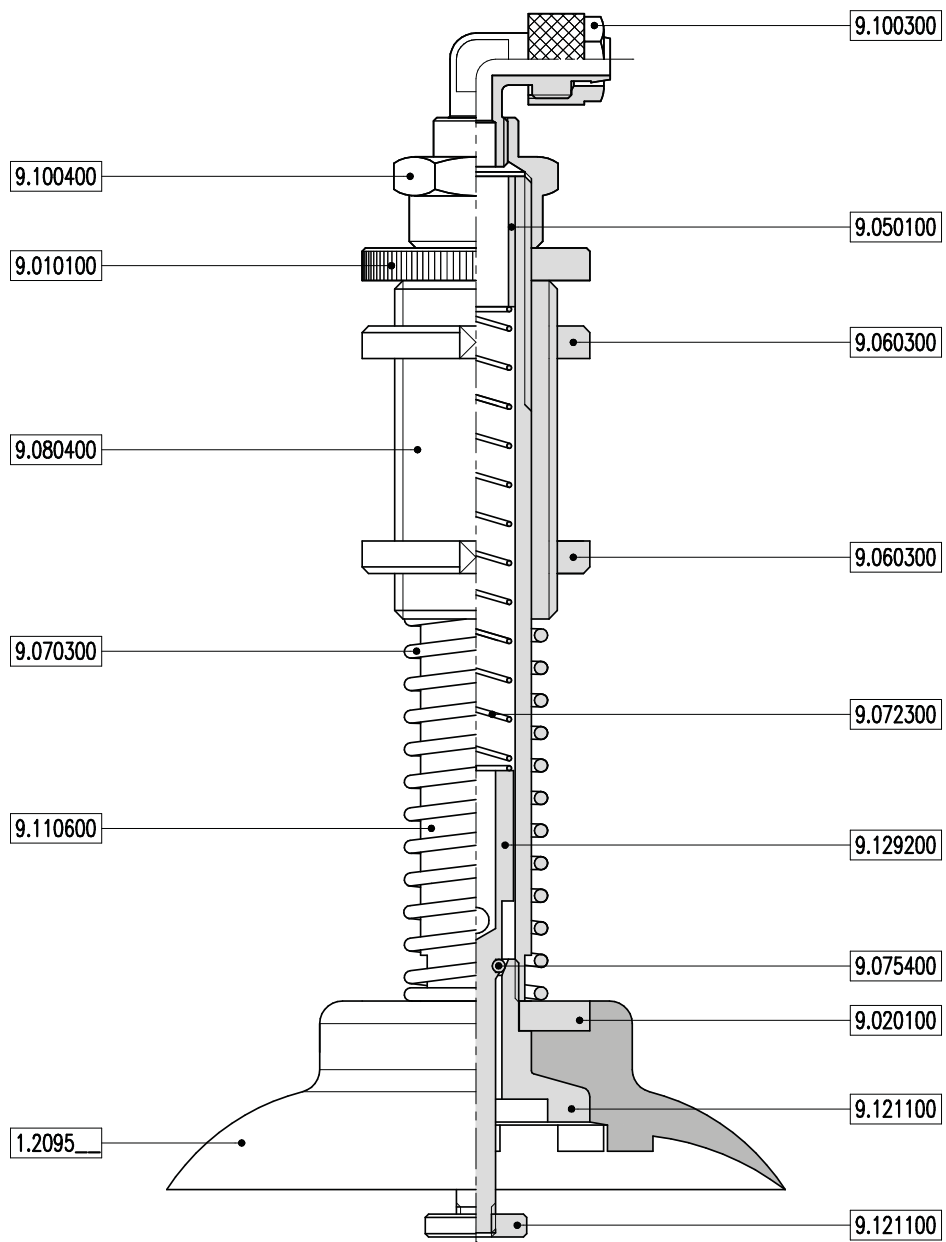
Cod: 8.513300



PORTAVENTOSA

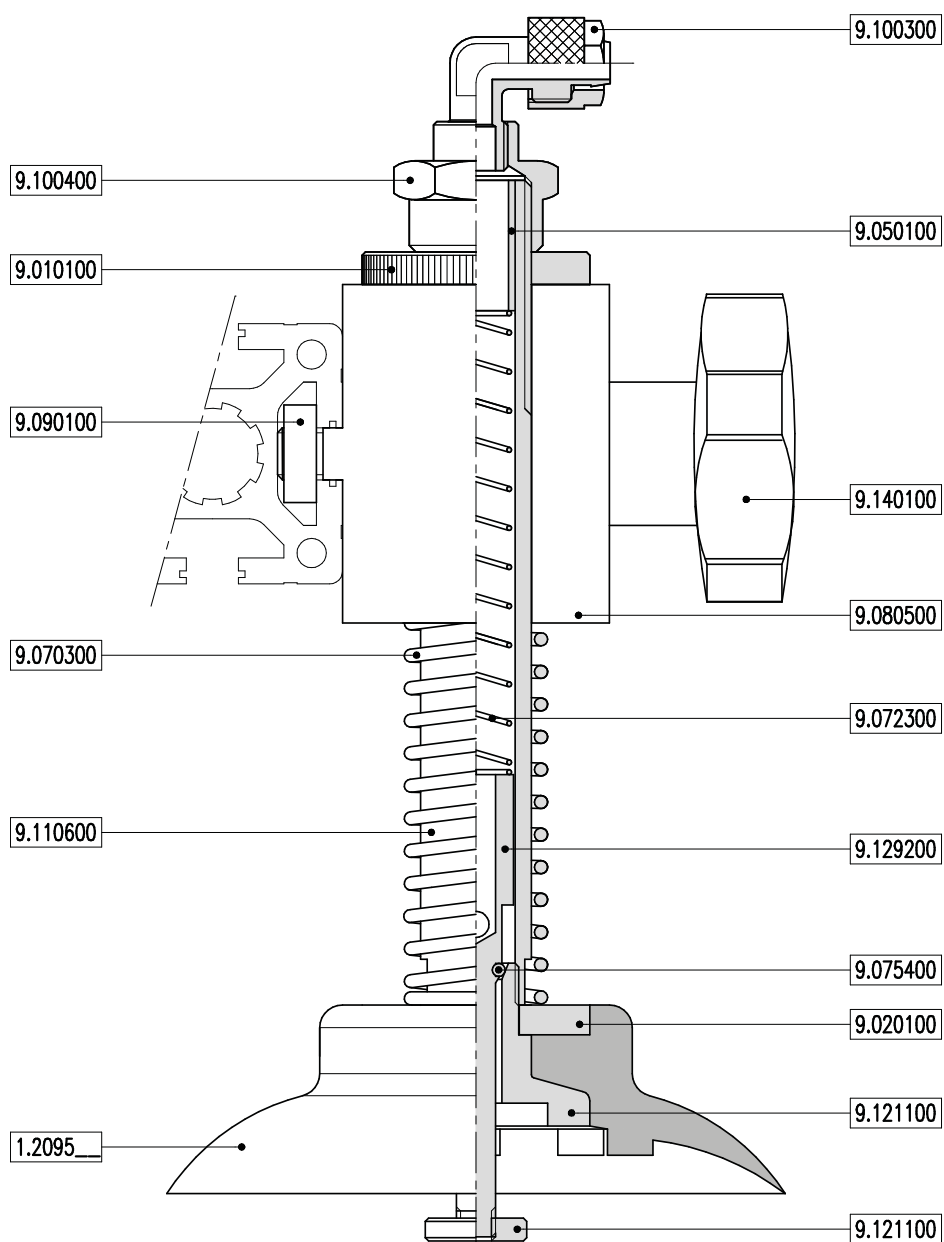
Esempio gruppo completo

1.2095__ + 6.004000 + 8.322200



Esempio gruppo completo

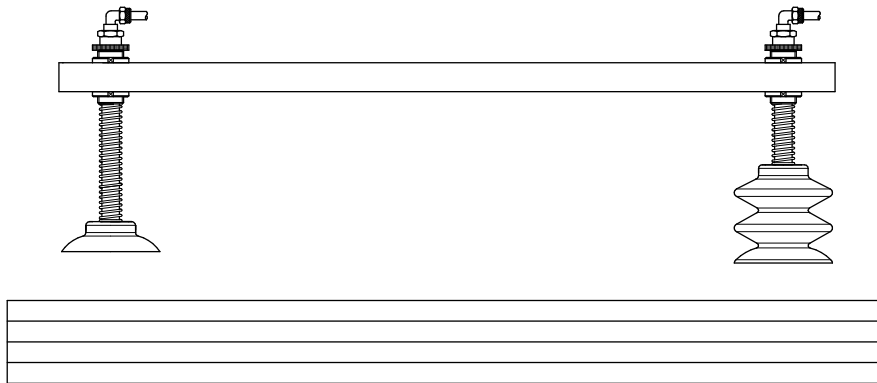
1.2095__ + 6.004000 + 8.323200



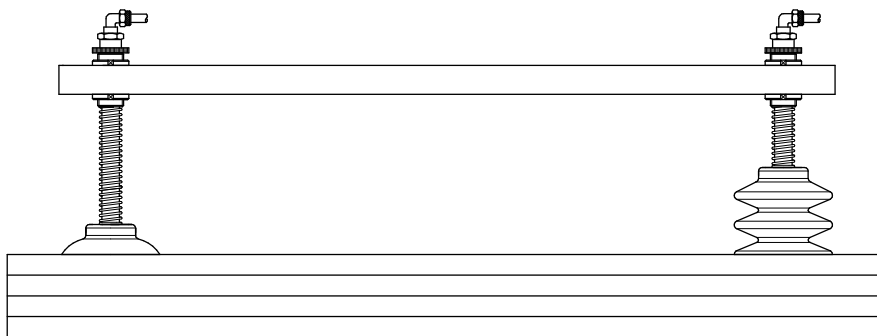
Azione combinata stacco pannelli_ ES 1

ventosa a coppa 1.2095 + ventosa a soffietto 1.3095

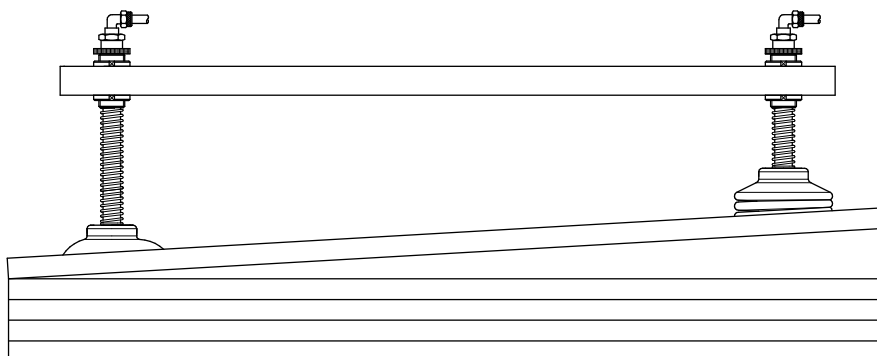
1



2



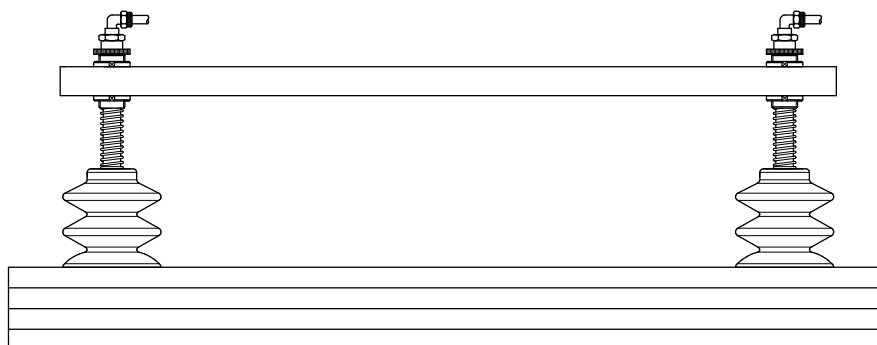
3



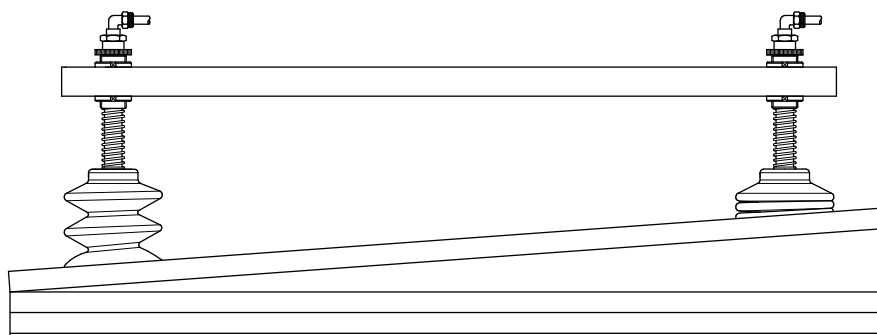
Azione combinata stacco pannelli_ ES 2

ventosa a soffietto 1.3095 + ventosa a soffietto 1.3095

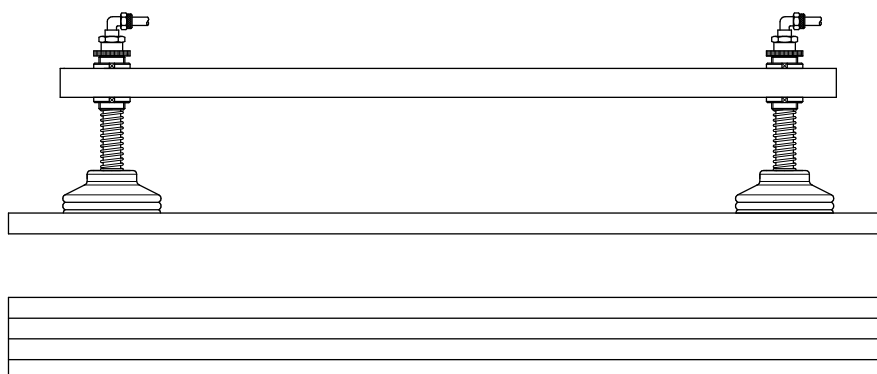
1



2



3



VACUUM EXPERTS



Via Cavour 3
21032 Caravate (VA)
+39 0332 610101 - info@specialrubber.it
specialrubber.it